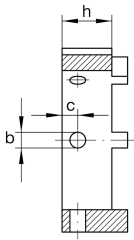
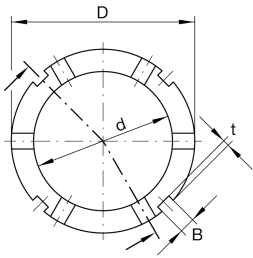
**AMS90**

Locknut socketadapter for precision locknuts AM

adapter for precision locknuts AM

**Technical information****Dimensions**

D	130 mm	Outside diameter
h	25 mm	Height
d	95 mm	Bore diameter
B	10 mm	Groove width
b	8 mm	Bore diameter through hole
	H11	Bore diameter through hole fit
c	10 mm	Distance bore
t	4 mm	Groove depth
≈m	1,189 kg	Weight

**Additional information**

AM90

Suitable nut