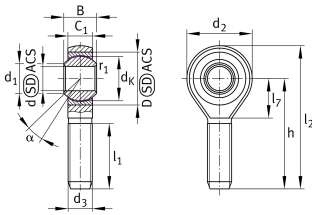


**GAKSL16-PS** [↗](#)

Rod end

Corrosion-resistant rod end, with external thread, maintenance-free, sliding layer: PTFE film, DIN ISO 12240-4, dimension series K, type F, open design

Technical information

**Your current product variant**

Clampable	Not clampable
Grease nipples	Cannot be relubricated
Slotted	No
Thread Pitch	Left-hand thread
Maintenance	Maintenance free
Sealing	Without
Material sliding Layer	Sliding foil
Mounting	External thread

Main Dimensions & Performance Data

d_2	43 mm	Outer diameter eye
C_r	39.000 N	Basic dynamic load rating
C_{0r}	19.000 N	Basic static load rating
d	16 mm	Bore diameter bearing
D	32 mm	Outside diameter bearing
l_2	87,5 mm	Total length
B	21 mm	Width inner ring
$\approx m$	0,205 kg	Weight



Dimensions

d_k	28,5 mm	Ball diameter
d_1	19,4 mm	Outer flange diameter inner ring
d_3	M16	Thread size
h	66 mm	Length of thread
C_1	15 mm	Width of the rod end
α	15 °	Tilt angle
l_1	37 mm	Thread length
l_7	21 mm	Length of the flat surface from the bearing bore centre to the shank
B_{UT}	-0,12 mm	Width inner ring , lower tolerance
B_{OT}	0 mm	Width inner ring; upper tolerance
d_T	H7	Bore diameter_bearing_tolerance
d_{UT}	0 mm	Bore diameter, lower tolerance
d_{OT}	0,018 mm	Bore diameter bearing upper tolerance
G_r	0,005 - 0,045	Radial clearance
G_{rmax}	0,045 mm	Radial clearance, maximum
G_{rmin}	0,005 mm	Radial clearance, minimum

Temperature range





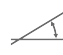

T_{min}	-10 °C	Operating temperature min.
T_{max}	80 °C	Operating temperature max.

Mounting dimensions

r_{1s}	0,3 mm	Smallest single chamfer dimension, inner ring
----------	--------	---



Characteristics

-  Radial load
-  Lifetime lubrication, freedom from maintenance
-  Not sealed
-  Protected against rust
-  Static angular error and misalignment
-  Dynamic angular error and misalignment