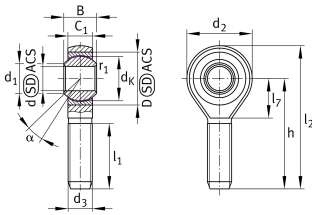


**GAKSL25-PS** [↗](#)

## Rod end

Corrosion-resistant rod end, with external thread, maintenance-free, sliding layer: PTFE film, DIN ISO 12240-4, dimension series K, type F, open design

## Technical information



## Your current product variant

Clampable	Not clampable
Mounting bolt	External thread
Grease nipples	Cannot be relubricated
Slotted	No
Thread Pitch	Left-hand thread
Maintenance	Maintenance free
Sealing	Without
Material sliding Layer	Sliding foil

## Main Dimensions &amp; Performance Data

$d_2$	61 mm	Outer diameter eye
$C_r$	85.000 N	Basic dynamic load rating
$C_{0r}$	36.200 N	Basic static load rating
$d$	25 mm	Bore diameter bearing
$D$	47 mm	Outside diameter bearing
$l_2$	125 mm	Total length
$B$	31 mm	Width inner ring
$\approx m$	0,612 kg	Weight



## Dimensions

$d_k$	42,8 mm	Ball diameter
$d_1$	29,6 mm	Outer flange diameter inner ring
$d_3$	M24X2	Thread size
$h$	94 mm	Length of thread
$C_1$	22 mm	Width of the rod end
$\alpha$	15 °	Tilt angle
$l_1$	55 mm	Thread length
$l_7$	30 mm	Length of the flat surface from the bearing bore centre to the shank
$B_{UT}$	-0,12 mm	Width inner ring , lower tolerance
$B_{OT}$	0 mm	Width inner ring; upper tolerance
$d_T$	H7	Bore diameter_bearing_tolerance
$d_{UT}$	0 mm	Bore diameter, lower tolerance
$d_{OT}$	0,021 mm	Bore diameter bearing upper tolerance
$G_r$	0,010 - 0,055	Radial clearance
$G_{rmax}$	0,055 mm	Radial clearance, maximum
$G_{rmin}$	0,01 mm	Radial clearance, minimum

## Temperature range

$T_{min}$	-10 °C	Operating temperature min.
$T_{max}$	80 °C	Operating temperature max.

## Mounting dimensions

$r_{1s}$	0,3 mm	Smallest single chamfer dimension, inner ring
----------	--------	---



### Characteristics

---



Radial load



Lifetime lubrication, freedom from maintenance



Not sealed



Protected against rust



Static angular error and misalignment



Dynamic angular error and misalignment