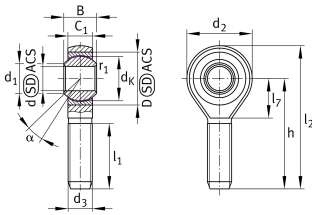


**GAKSR12-PS** [↗](#)

Rod end

Corrosion-resistant rod end, with external thread, right hand thread, maintenance-free, sliding layer: PTFE film, DIN ISO 12240-4, dimension series K, type F, open design

Technical information

**Your current product variant**

Clampable	Not clampable
Mounting	External thread
Grease nipples	Cannot be relubricated
Slotted	No
Thread Pitch	Right-hand thread
Maintenance	Maintenance free
Type of Sealing	Without
Material sliding Layer	Sliding foil

Main Dimensions & Performance Data

d_2	33 mm	Outer diameter eye
C_r	24.000 N	Basic dynamic load rating
C_{0r}	9.100 N	Basic static load rating
d	12 mm	Bore diameter bearing
D	26 mm	Outside diameter bearing
l_2	70,5 mm	Total length
B	16 mm	Width inner ring
$\approx m$	97 g	Weight



Dimensions

d_k	22,2 mm	Ball diameter
d_1	15,4 mm	Outer flange diameter inner ring
d_3	M12	Thread size
h	54 mm	Length of thread
C_1	12 mm	Width of the rod end
α	13 °	Tilt angle
l_1	32 mm	Thread length
l_7	16 mm	Length of the flat surface from the bearing bore centre to the shank
B_{UT}	-0,12 mm	Width inner ring , lower tolerance
B_{OT}	0 mm	Width inner ring; upper tolerance
d_T	H7	Bore diameter_bearing_tolerance
d_{UT}	0 mm	Bore diameter, lower tolerance
d_{OT}	0,018 mm	Bore diameter bearing upper tolerance
G_r	0,005 - 0,045	Radial clearance
G_{rmax}	0,045 mm	Radial clearance, maximum
G_{rmin}	0,005 mm	Radial clearance, minimum

Temperature range

T_{min}	-10 °C	Operating temperature min.
T_{max}	80 °C	Operating temperature max.

Mounting dimensions

r_{1s}	0,3 mm	Smallest single chamfer dimension, inner ring
----------	--------	-----------------------------------------------



Characteristics



Radial load



Lifetime lubrication, freedom from maintenance



Not sealed



Protected against rust



Static angular error and misalignment



Dynamic angular error and misalignment