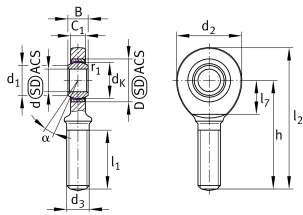


**GAL17-UK-2RS**

Rod end

Rod end with external thread, left hand thread, maintenance-free, sliding layer: ELGOGLIDE, DIN ISO 12240-4, dimension series E, type M, inner ring curved surface with hard chromium coating, sealed

Technical information

**Your current product variant**

Clampable	Not clampable	
Grease nipples	Cannot be relubricated	
Slotted	No	
Thread Pitch	Left-hand thread	
Maintenance	Maintenance free	
Sealing	2RS	Lip seals on both sides
Material sliding Layer	ELGOGLIDE	
Mounting	External thread	

Main Dimensions & Performance Data

d ₂	46 mm	Outer diameter eye
C _r	48.800 N	Basic dynamic load rating
C _{0r}	56.500 N	Basic static load rating
d	17 mm	Bore diameter bearing
D	30 mm	Outside diameter bearing
l ₂	92 mm	Total length
B	14 mm	Width inner ring
≈m	200 g	Weight



Dimensions

d_k	25 mm	Ball diameter
d_1	20,7 mm	Outer flange diameter inner ring
d_3	M16	Thread size
h	69 mm	Length of thread
C_1	11 mm	Width of the rod end
α	10 °	Tilt angle
l_1	36 mm	Thread length
l_7	23 mm	Length of the flat surface from the bearing bore centre to the shank
B_{UT}	-0,12 mm	Width inner ring , lower tolerance
B_{OT}	0 mm	Width inner ring; upper tolerance
d_{UT}	-0,008 mm	Bore diameter, lower tolerance
d_{OT}	0 mm	Bore diameter bearing upper tolerance
G_r	0 - 0,04	Radial clearance
G_{rmax}	0,04 mm	Radial clearance, maximum
G_{rmin}	0 mm	Radial clearance, minimum

Temperature range

T_{min}	-30 °C	Operating temperature min.
T_{max}	130 °C	Operating temperature max.

Mounting dimensions

r_{1s}	0,3 mm	Smallest single chamfer dimension, inner ring
----------	--------	---



Characteristics



Radial load



Axial load in one direction



Axial load in two directions



Lifetime lubrication, freedom from maintenance



Sealed on both sides



Static angular error and misalignment



Dynamic angular error and misalignment