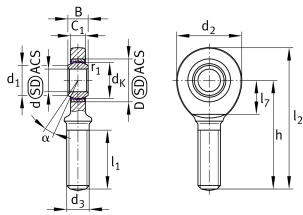


**GAL25-UK-2RS** [↗](#)

Rod end

Rod end with external thread, left hand thread, maintenance-free, sliding layer: ELGOGLIDE, DIN ISO 12240-4, dimension series E, type M, inner ring curved surface with hard chromium coating, sealed

Technical information



Your current product variant

Clampable	Not clampable	
Mounting bolt	External thread	
Grease nipples	Cannot be relubricated	
Slotted	No	
Thread Pitch	Left-hand thread	
Maintenance	Maintenance free	
Sealing	2RS	Lip seals on both sides
Material sliding Layer	ELGOGLIDE	

Main Dimensions & Performance Data

d_2	64 mm	Outer diameter eye
C_r	128.000 N	Basic dynamic load rating
C_{0r}	105.000 N	Basic static load rating
d	25 mm	Bore diameter bearing
D	42 mm	Outside diameter bearing
l_2	126 mm	Total length
B	20 mm	Width inner ring
$\approx m$	0,58 kg	Weight



Dimensions

d_k	35,5 mm	Ball diameter
d_1	29,3 mm	Outer flange diameter inner ring
d_3	M24x2	Thread size
h	94 mm	Length of thread
C_1	17 mm	Width of the rod end
α	7 °	Tilt angle
l_1	53 mm	Thread length
l_7	32 mm	Length of the flat surface from the bearing bore centre to the shank
B_{UT}	-0,12 mm	Width inner ring , lower tolerance
B_{OT}	0 mm	Width inner ring; upper tolerance
d_{UT}	-0,01 mm	Bore diameter, lower tolerance
d_{OT}	0 mm	Bore diameter bearing upper tolerance
G_r	0 - 0,05	Radial clearance
G_{rmax}	0,05 mm	Radial clearance, maximum
G_{rmin}	0 mm	Radial clearance, minimum

Temperature range



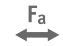




T_{min}	-30 °C	Operating temperature min.
T_{max}	130 °C	Operating temperature max.

Mounting dimensions

r_{1s}	0,6 mm	Smallest single chamfer dimension, inner ring
----------	--------	---



Characteristics

-  Radial load
-  Axial load in one direction
-  Axial load in two directions
-  Lifetime lubrication, freedom from maintenance
-  Sealed on both sides
-  Static angular error and misalignment
-  Dynamic angular error and misalignment