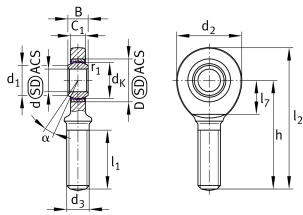


**GAL30-UK-2RS** [↗](#)

## Rod end

Rod end with external thread, left hand thread, maintenance-free, sliding layer: ELGOGLIDE, DIN ISO 12240-4, dimension series E, type M, inner ring curved surface with hard chromium coating, sealed

## Technical information



## Your current product variant

Clampable	Not clampable	
Mounting	External thread	
Grease nipples	Cannot be relubricated	
Slotted	No	
Thread Pitch	Left-hand thread	
Maintenance	Maintenance free	
Type of Seal	2RS	Lip seals on both sides
Material sliding Layer	ELGOGLIDE	

## Main Dimensions &amp; Performance Data

$d_2$	73 mm	Outer diameter eye
$C_r$	165.000 N	Basic dynamic load rating
$C_{0r}$	139.000 N	Basic static load rating
$d$	30 mm	Bore diameter bearing
$D$	47 mm	Outside diameter bearing
$l_2$	146,5 mm	Total length
$B$	22 mm	Width inner ring
$\approx m$	0,93 kg	Weight



## Dimensions

$d_k$	40,7 mm	Ball diameter
$d_1$	34,2 mm	Outer flange diameter inner ring
$d_3$	M30x2	Thread size
$h$	110 mm	Length of thread
$C_1$	19 mm	Width of the rod end
$\alpha$	6 °	Tilt angle
$l_1$	65 mm	Thread length
$l_7$	37 mm	Length of the flat surface from the bearing bore centre to the shank
$B_{UT}$	-0,12 mm	Width inner ring , lower tolerance
$B_{OT}$	0 mm	Width inner ring; upper tolerance
$d_{UT}$	-0,01 mm	Bore diameter, lower tolerance
$d_{OT}$	0 mm	Bore diameter bearing upper tolerance
$G_r$	0 - 0,05	Radial clearance
$G_{rmax}$	0,05 mm	Radial clearance, maximum
$G_{rmin}$	0 mm	Radial clearance, minimum

## Temperature range

$T_{min}$	-30 °C	Operating temperature min.
$T_{max}$	130 °C	Operating temperature max.

## Mounting dimensions

$r_{1s}$	0,6 mm	Smallest single chamfer dimension, inner ring
----------	--------	---



### Characteristics

---



Radial load



Axial load in one direction



Axial load in two directions



Lifetime lubrication, freedom from maintenance



Sealed on both sides



Static angular error and misalignment



Dynamic angular error and misalignment