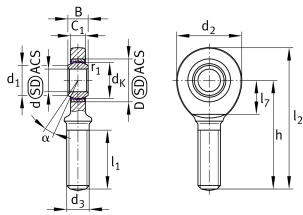


**GAR10-UK**

Rod end

Rod end with external thread, right hand thread, maintenance-free, sliding layer: PTFE composite, DIN ISO 12240-4, dimension series E, type M, inner ring curved surface with hard chromium coating, open design

Technical information



Your current product variant

Clampable	Not clampable
Grease nipples	Cannot be relubricated
Slotted	No
Thread Pitch	Right-hand thread
Maintenance	Maintenance free
Sealing	Without
Mounting	External thread

Main Dimensions & Performance Data

d_2	29 mm	Outer diameter eye
C_r	8.640 N	Basic dynamic load rating
C_{0r}	20.600 N	Basic static load rating
d	10 mm	Bore diameter bearing
D	19 mm	Outside diameter bearing
l_2	62,5 mm	Total length
B	9 mm	Width inner ring
$\approx m$	53,374 g	Weight



Dimensions

d_k	16 mm	Ball diameter
d_1	13,2 mm	Outer flange diameter inner ring
d_3	M10	Thread size
h	48 mm	Length of thread
C_1	7 mm	Width of the rod end
α	12 °	Tilt angle
l_1	26 mm	Thread length
l_7	15 mm	Length of the flat surface from the bearing bore centre to the shank
B_{UT}	-0,12 mm	Width inner ring , lower tolerance
B_{OT}	0 mm	Width inner ring; upper tolerance
d_{UT}	-0,008 mm	Bore diameter, lower tolerance
d_{OT}	0 mm	Bore diameter bearing upper tolerance
G_r	0 - 0,032	Radial clearance
G_{rmax}	0,032 mm	Radial clearance, maximum
G_{rmin}	0 mm	Radial clearance, minimum

Temperature range

T_{min}	-50 °C	Operating temperature min.
T_{max}	200 °C	Operating temperature max.

Mounting dimensions

r_{1s}	0,3 mm	Smallest single chamfer dimension, inner ring
----------	--------	---



Characteristics



Radial load



Lifetime lubrication, freedom from maintenance



Not sealed



Static angular error and misalignment



Dynamic angular error and misalignment