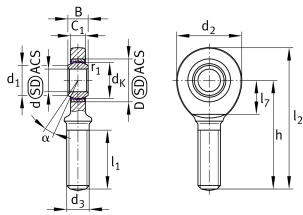


**GAR12-UK**

## Rod end

Rod end with external thread, right hand thread, maintenance-free, sliding layer: PTFE composite, DIN ISO 12240-4, dimension series E, type M, inner ring curved surface with hard chromium coating, open design

## Technical information

**Your current product variant**

Clampable	Not clampable
Grease nipples	Cannot be relubricated
Slotted	No
Thread Pitch	Right-hand thread
Maintenance	Maintenance free
Sealing	Without
Mounting	External thread

**Main Dimensions & Performance Data**

$d_2$	34 mm	Outer diameter eye
$C_r$	11.300 N	Basic dynamic load rating
$C_{0r}$	30.200 N	Basic static load rating
$d$	12 mm	Bore diameter bearing
$D$	22 mm	Outside diameter bearing
$l_2$	71 mm	Total length
$B$	10 mm	Width inner ring
$\approx m$	75,2 g	Weight



### Dimensions

$d_k$	18 mm	Ball diameter
$d_1$	14,9 mm	Outer flange diameter inner ring
$d_3$	M12	Thread size
$h$	54 mm	Length of thread
$C_1$	8 mm	Width of the rod end
$\alpha$	11 °	Tilt angle
$l_1$	28 mm	Thread length
$l_7$	18 mm	Length of the flat surface from the bearing bore centre to the shank
$B_{UT}$	-0,12 mm	Width inner ring , lower tolerance
$B_{OT}$	0 mm	Width inner ring; upper tolerance
$d_{UT}$	-0,008 mm	Bore diameter, lower tolerance
$d_{OT}$	0 mm	Bore diameter bearing upper tolerance
$G_r$	0 - 0,032	Radial clearance
$G_{rmax}$	0,032 mm	Radial clearance, maximum
$G_{rmin}$	0 mm	Radial clearance, minimum

### Temperature range

$T_{min}$	-50 °C	Operating temperature min.
$T_{max}$	200 °C	Operating temperature max.

### Mounting dimensions

$r_{1s}$	0,3 mm	Smallest single chamfer dimension, inner ring
----------	--------	---



### Characteristics

---



Radial load



Lifetime lubrication, freedom from maintenance



Not sealed



Static angular error and misalignment



Dynamic angular error and misalignment