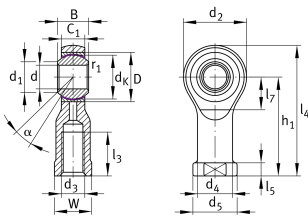


**GIKPSR16-PS**

## Rod end

Corrosion-resistant rod end, with internal thread, right hand thread : maintenance-free, sliding layer: PTFE film, DIN ISO 12240-4, dimension series K, type F, open design fine pitch thread connector for standard pneumatic cylinders to DIN ISO 15552

## Technical information



## Your current product variant

|                    |                        |
|--------------------|------------------------|
| Clampable          | Not clampable          |
| Maintenance        | Maintenance free       |
| Mounting           | Internal thread        |
| Lubrication nipple | Cannot be relubricated |
| Slotted            | No                     |
| Thread Pitch       | Right-hand thread      |
| Sealing            | Without                |

## Main Dimensions &amp; Performance Data

|             |          |                                   |
|-------------|----------|-----------------------------------|
| $C_r$       | 39.000 N | Basic dynamic load rating, radial |
| $C_{0r}$    | 19.000 N | Basic static load rating, radial  |
| d           | 16 mm    | Bore diameter bearing             |
| $d_2$       | 43 mm    | Outer eye diameter                |
| $l_4$       | 85,5 mm  | Total length internal thread head |
| $\approx m$ | 210 g    | Weight                            |



## Dimensions

|                   |               |  |
|-------------------|---------------|--|
| C <sub>1</sub>    | 15 mm         | Width of the rod end                   |
| D                 | 32 mm         | Outside diameter bearing               |
| B                 | 21 mm         | Width inner ring                       |
| d <sub>K</sub>    | 28,5 mm       | Ball diameter                          |
| d <sub>3</sub>    | M16x1,5       | Thread size                            |
| d <sub>4</sub>    | 22 mm         | Shank diameter                         |
| d <sub>5</sub>    | 27 mm         | Shank diameter, large                  |
| h <sub>1</sub>    | 64 mm         | Shank Length Internal thread head      |
| α                 | 15 °          | Tilt angle                             |
| l <sub>3</sub>    | 24 mm         | Thread length Internal thread          |
| l <sub>5</sub>    | 8 mm          | Length rod end shank                   |
| l <sub>7</sub>    | 21 mm         | Distance drilling with/shaft start     |
| W                 | 22 mm         | Width Across Flat                      |
| d <sub>UT</sub>   | 0 mm          | Bore diameter bearing, lower tolerance |
| d <sub>T</sub>    | H7            | Bore diameter bearing, tolerance       |
| d <sub>OT</sub>   | 0,018 mm      | Bore diameter bearing, upper tolerance |
| B <sub>UT</sub>   | 0 mm          | Width inner ring, lower tolerance      |
| B <sub>OT</sub>   | 0,012 mm      | Width inner ring, upper tolerance      |
| G <sub>r</sub>    | 0,005 - 0,045 | Radial Clearance                       |
| G <sub>rmin</sub> | 0,005 mm      | Radial clearance, minimum              |
| G <sub>rmax</sub> | 0,045 mm      | Radial clearance, maximum              |

## Mounting dimensions

|                    |         |                                  |
|--------------------|---------|----------------------------------|
| r <sub>1smin</sub> | 0,3 mm  | Edge Spacing                     |
| d <sub>1</sub>     | 19,4 mm | Outer flange diameter inner ring |



### Temperature range

|            |        |                            |
|------------|--------|----------------------------|
| $T_{\min}$ | -10 °C | Operating temperature min. |
| $T_{\max}$ | 80 °C  | Operating temperature max. |

### Characteristics

-  Radial load
-  Axial load in one direction
-  Axial load in two directions
-  Lifetime lubrication, freedom from maintenance
-  Not sealed
-  Protected against rust
-  Static angular error and misalignment
-  Dynamic angular error and misalignment