

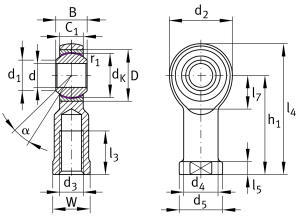
**GIKL16-PW** [↗](#)

## Rod end



Rod end with internal thread, left hand thread, maintenance-free, sliding layer: PTFE film, brass outer ring, DIN ISO 12240-4, dimension series K, type F, open design

## Technical information



## Your current product variant

Clampable	Not clampable
Maintenance	Maintenance free
Mounting	Internal thread
Lubrication nipple	Cannot be relubricated
Slotted	No
Thread Pitch	Left-hand thread
Type of Sealing	Without

## Main Dimensions &amp; Performance Data

$C_r$	38.600 N	Basic dynamic load rating, radial
$C_{0r}$	45.300 N	Basic static load rating, radial
d	16 mm	Bore diameter bearing
$d_2$	42 mm	Outer eye diameter
$l_4$	85 mm	Total length internal thread head
$\approx m$	0,24 kg	Weight



## Dimensions

C <sub>1</sub>	15 mm	Width of the rod end
D	32 mm	Outside diameter bearing
B	21 mm	Width inner ring
d <sub>K</sub>	28,575 mm	Ball diameter
d <sub>3</sub>	M16	Thread size
d <sub>4</sub>	22 mm	Shank diameter
d <sub>5</sub>	28 mm	Shank diameter, large
h <sub>1</sub>	64 mm	Shank Length Internal thread head
α	15 °	Tilt angle
l <sub>3</sub>	28 mm	Thread length Internal thread
l <sub>5</sub>	8 mm	Length rod end shank
l <sub>7</sub>	23 mm	Distance drilling with/shaft start
W	22 mm	Width Across Flat
d <sub>UT</sub>	0 mm	Bore diameter bearing, lower tolerance
d <sub>T</sub>	H7	Bore diameter bearing, tolerance
d <sub>OT</sub>	0,018 mm	Bore diameter bearing, upper tolerance
B <sub>UT</sub>	-0,12 mm	Width inner ring, lower tolerance
B <sub>OT</sub>	0 mm	Width inner ring, upper tolerance
G <sub>r</sub>	0 - 0,035	Radial Clearance
G <sub>rmin</sub>	0 mm	Radial clearance, minimum
G <sub>rmax</sub>	0,035 mm	Radial clearance, maximum

## Mounting dimensions

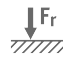

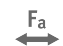




r <sub>1smin</sub>	0,3 mm	Edge Spacing
d <sub>1</sub>	19,3 mm	Outer flange diameter inner ring



### Temperature range

$T_{\min}$	-50 °C	Operating temperature min.
$T_{\max}$	200 °C	Operating temperature max.

### Characteristics

-  Radial load
-  Axial load in one direction
-  Axial load in two directions
-  Lifetime lubrication, freedom from maintenance
-  Not sealed
-  Static angular error and misalignment
-  Dynamic angular error and misalignment