

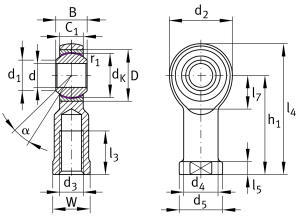
**GIKL25-PW**

## Rod end



Rod end with internal thread, left hand thread, maintenance-free, sliding layer: PTFE film, brass outer ring, DIN ISO 12240-4, dimension series K, type F, open design

## Technical information



## Your current product variant

Clampable	Not clampable
Maintenance	Maintenance free
Mounting	Internal thread
Lubrication nipple	Cannot be relubricated
Slotted	No
Thread Pitch	Left-hand thread
Type of Seal	Without

## Main Dimensions &amp; Performance Data

$C_r$	84.800 N	Basic dynamic load rating, radial
$C_{0r}$	72.900 N	Basic static load rating, radial
d	25 mm	Bore diameter bearing
$d_2$	60 mm	Outer eye diameter
$l_4$	124 mm	Total length internal thread head
$\approx m$	0,73 kg	Weight



## Dimensions

C <sub>1</sub>	22 mm	Width of the rod end
D	47 mm	Outside diameter bearing
B	31 mm	Width inner ring
d <sub>K</sub>	42,85 mm	Ball diameter
d <sub>3</sub>	M24x2	Thread size
d <sub>4</sub>	33,5 mm	Shank diameter
d <sub>5</sub>	42 mm	Shank diameter, large
h <sub>1</sub>	94 mm	Shank Length Internal thread head
α	15 °	Tilt angle
l <sub>3</sub>	42 mm	Thread length Internal thread
l <sub>5</sub>	12 mm	Length rod end shank
l <sub>7</sub>	32 mm	Distance drilling with/shaft start
W	36 mm	Width Across Flat
d <sub>UT</sub>	0 mm	Bore diameter bearing, lower tolerance
d <sub>T</sub>	H7	Bore diameter bearing, tolerance
d <sub>OT</sub>	0,021 mm	Bore diameter bearing, upper tolerance
B <sub>UT</sub>	-0,12 mm	Width inner ring, lower tolerance
B <sub>OT</sub>	0 mm	Width inner ring, upper tolerance
G <sub>r</sub>	0 - 0,035	Radial Clearance
G <sub>rmin</sub>	0 mm	Radial clearance, minimum
G <sub>rmax</sub>	0,035 mm	Radial clearance, maximum

## Mounting dimensions

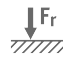


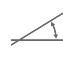

r <sub>1smin</sub>	0,3 mm	Edge Spacing
d <sub>1</sub>	29,5 mm	Outer flange diameter inner ring



### Temperature range

$T_{\min}$	-50 °C	Operating temperature min.
$T_{\max}$	200 °C	Operating temperature max.

### Characteristics

-   $F_r$  Radial load
-   $L_h$  Lifetime lubrication, freedom from maintenance
-  Not sealed
-  Static angular error and misalignment
-  Dynamic angular error and misalignment