

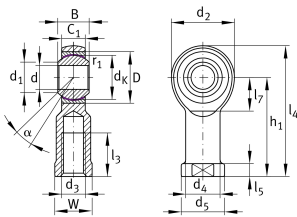
**GIKL30-PW**

Rod end



Rod end with internal thread, left hand thread, maintenance-free, sliding layer: PTFE film, brass outer ring, DIN ISO 12240-4, dimension series K, type F, open design

Technical information



Your current product variant

Clampable	Not clampable
Maintenance	Maintenance free
Mounting	Internal thread
Lubrication nipple	Cannot be relubricated
Slotted	No
Thread Pitch	Left-hand thread
Type of Sealing	Without

Main Dimensions & Performance Data

C_r	114.000 N	Basic dynamic load rating, radial
C_{0r}	95.900 N	Basic static load rating, radial
d	30 mm	Bore diameter bearing
d_2	70 mm	Outer eye diameter
l_4	145 mm	Total length internal thread head
$\approx m$	1,17 kg	Weight



Dimensions

C ₁	25 mm	Width of the rod end
D	55 mm	Outside diameter bearing
B	37 mm	Width inner ring
d _K	50,8 mm	Ball diameter
d ₃	M30x2	Thread size
d ₄	40 mm	Shank diameter
d ₅	50 mm	Shank diameter, large
h ₁	110 mm	Shank Length Internal thread head
α	17 °	Tilt angle
l ₃	51 mm	Thread length Internal thread
l ₅	15 mm	Length rod end shank
l ₇	37 mm	Distance drilling with/shaft start
W	41 mm	Width Across Flat
d _{UT}	0 mm	Bore diameter bearing, lower tolerance
d _T	H7	Bore diameter bearing, tolerance
d _{OT}	0,021 mm	Bore diameter bearing, upper tolerance
B _{UT}	-0,12 mm	Width inner ring, lower tolerance
B _{OT}	0 mm	Width inner ring, upper tolerance
G _r	0 - 0,035	Radial Clearance
G _{rmin}	0 mm	Radial clearance, minimum
G _{rmax}	0,035 mm	Radial clearance, maximum

Mounting dimensions

r _{1smin}	0,3 mm	Edge Spacing
d ₁	34,8 mm	Outer flange diameter inner ring




Temperature range

T_{\min} -50 °C Operating temperature min.

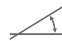
T_{\max} 200 °C Operating temperature max.


Characteristics

 F_r Radial load

 L_h Lifetime lubrication, freedom from maintenance

 Not sealed

 Static angular error and misalignment

 Dynamic angular error and misalignment