

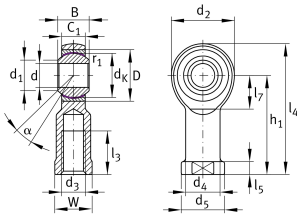
**GIKL8-PW** [↗](#)

## Rod end



Rod end with internal thread, left hand thread, maintenance-free, sliding layer: PTFE film, brass outer ring, DIN ISO 12240-4, dimension series K, type F, open design

## Technical information

**Your current product variant**

|                    |                        |
|--------------------|------------------------|
| Clampable          | Not clampable          |
| Maintenance        | Maintenance free       |
| Lubrication nipple | Cannot be relubricated |
| Slotted            | No                     |
| Thread Pitch       | Left-hand thread       |
| Sealing            | Without                |
| Mounting           | Internal thread        |

**Main Dimensions & Performance Data**

|             |          |                                   |
|-------------|----------|-----------------------------------|
| $C_r$       | 12.900 N | Basic dynamic load rating, radial |
| $C_{0r}$    | 13.100 N | Basic static load rating, radial  |
| $d$         | 8 mm     | Bore diameter bearing             |
| $d_2$       | 24 mm    | Outer eye diameter                |
| $l_4$       | 48 mm    | Total length internal thread head |
| $\approx m$ | 49,5 g   | Weight                            |



## Dimensions

|                   |           |  |
|-------------------|-----------|--|
| C <sub>1</sub>    | 9 mm      | Width of the rod end                   |
| D                 | 19 mm     | Outside diameter bearing               |
| B                 | 12 mm     | Width inner ring                       |
| d <sub>K</sub>    | 15,875 mm | Ball diameter                          |
| d <sub>3</sub>    | M8        | Thread size                            |
| d <sub>4</sub>    | 12,5 mm   | Shank diameter                         |
| d <sub>5</sub>    | 16 mm     | Shank diameter, large                  |
| h <sub>1</sub>    | 36 mm     | Shank Length Internal thread head      |
| α                 | 14 °      | Tilt angle                             |
| l <sub>3</sub>    | 16 mm     | Thread length Internal thread          |
| l <sub>5</sub>    | 5 mm      | Length rod end shank                   |
| l <sub>7</sub>    | 13 mm     | Distance drilling with/shaft start     |
| W                 | 14 mm     | Width Across Flat                      |
| d <sub>UT</sub>   | 0 mm      | Bore diameter bearing, lower tolerance |
| d <sub>T</sub>    | H7        | Bore diameter bearing, tolerance       |
| d <sub>OT</sub>   | 0,015 mm  | Bore diameter bearing, upper tolerance |
| B <sub>UT</sub>   | -0,12 mm  | Width inner ring, lower tolerance      |
| B <sub>OT</sub>   | 0 mm      | Width inner ring, upper tolerance      |
| G <sub>r</sub>    | 0 - 0,035 | Radial Clearance                       |
| G <sub>rmin</sub> | 0 mm      | Radial clearance, minimum              |
| G <sub>rmax</sub> | 0,035 mm  | Radial clearance, maximum              |

## Mounting dimensions

|                    |         |                                  |
|--------------------|---------|----------------------------------|
| r <sub>1smin</sub> | 0,3 mm  | Edge Spacing                     |
| d <sub>1</sub>     | 10,3 mm | Outer flange diameter inner ring |



### Temperature range

---

|           |        |                            |
|-----------|--------|----------------------------|
| $T_{min}$ | -50 °C | Operating temperature min. |
| $T_{max}$ | 200 °C | Operating temperature max. |

### Characteristics

---

-   $F_r$  Radial load
-   $L_h$  Lifetime lubrication, freedom from maintenance
-  Not sealed
-  Static angular error and misalignment
-  Dynamic angular error and misalignment