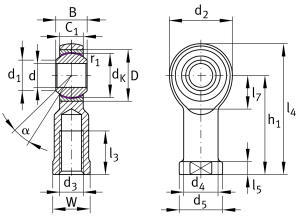


**GIKR6-PW**

Rod end

Rod end with internal thread, right hand thread, maintenance-free, sliding layer: PTFE film, brass outer ring, DIN ISO 12240-4, dimension series K, type F, open design

Technical information



Your current product variant

Clampable	Not clampable
Maintenance	Maintenance free
Lubrication nipple	Cannot be relubricated
Slotted	No
Thread Pitch	Right-hand thread
Type of Seal	Without
Mounting	Internal thread

Main Dimensions & Performance Data

C_r	7.750 N	Basic dynamic load rating, radial
C_{0r}	7.990 N	Basic static load rating, radial
d	6 mm	Bore diameter bearing
d_2	20 mm	Outer eye diameter
l_4	40 mm	Total length internal thread head
$\approx m$	29,2 g	Weight



Dimensions

C ₁	6,75 mm	Width of the rod end
D	16 mm	Outside diameter bearing
B	9 mm	Width inner ring
d _K	12,7 mm	Ball diameter
d ₃	M6	Thread size
d ₄	10 mm	Shank diameter
d ₅	13 mm	Shank diameter, large
h ₁	30 mm	Shank Length Internal thread head
α	13 °	Tilt angle
l ₃	12 mm	Thread length Internal thread
l ₅	5 mm	Length rod end shank
l ₇	11 mm	Distance drilling with/shaft start
W	11 mm	Width Across Flat
d _{UT}	0 mm	Bore diameter bearing, lower tolerance
d _T	H7	Bore diameter bearing, tolerance
d _{OT}	0,012 mm	Bore diameter bearing, upper tolerance
B _{UT}	-0,12 mm	Width inner ring, lower tolerance
B _{OT}	0 mm	Width inner ring, upper tolerance
G _r	0 - 0,035	Radial Clearance
G _{rmin}	0 mm	Radial clearance, minimum
G _{rmax}	0,035 mm	Radial clearance, maximum

Mounting dimensions




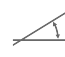

r _{1smin}	0,3 mm	Edge Spacing
d ₁	8,9 mm	Outer flange diameter inner ring



Temperature range

T_{\min}	-50 °C	Operating temperature min.
T_{\max}	200 °C	Operating temperature max.

Characteristics

-  F_r Radial load
-  L_h Lifetime lubrication, freedom from maintenance
-  Not sealed
-  Static angular error and misalignment
-  Dynamic angular error and misalignment