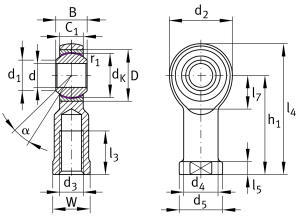


**GIKR8-PW**

## Rod end

Rod end with internal thread, right hand thread, maintenance-free, sliding layer: PTFE film, brass outer ring, DIN ISO 12240-4, dimension series K, type F, open design

## Technical information



## Your current product variant

Clampable	Not clampable
Maintenance	Maintenance free
Lubrication nipple	Cannot be relubricated
Slotted	No
Thread Pitch	Right-hand thread
Sealing	Without
Mounting	Internal thread

## Main Dimensions &amp; Performance Data

$C_r$	12.900 N	Basic dynamic load rating, radial
$C_{0r}$	13.100 N	Basic static load rating, radial
d	8 mm	Bore diameter bearing
$d_2$	24 mm	Outer eye diameter
$l_4$	48 mm	Total length internal thread head
$\approx m$	50,207 g	Weight



## Dimensions

C <sub>1</sub>	9 mm	Width of the rod end
D	19 mm	Outside diameter bearing
B	12 mm	Width inner ring
d <sub>K</sub>	15,875 mm	Ball diameter
d <sub>3</sub>	M8	Thread size
d <sub>4</sub>	12,5 mm	Shank diameter
d <sub>5</sub>	16 mm	Shank diameter, large
h <sub>1</sub>	36 mm	Shank Length Internal thread head
α	14 °	Tilt angle
l <sub>3</sub>	16 mm	Thread length Internal thread
l <sub>5</sub>	5 mm	Length rod end shank
l <sub>7</sub>	13 mm	Distance drilling with/shaft start
W	14 mm	Width Across Flat
d <sub>UT</sub>	0 mm	Bore diameter bearing, lower tolerance
d <sub>T</sub>	H7	Bore diameter bearing, tolerance
d <sub>OT</sub>	0,015 mm	Bore diameter bearing, upper tolerance
B <sub>UT</sub>	-0,12 mm	Width inner ring, lower tolerance
B <sub>OT</sub>	0 mm	Width inner ring, upper tolerance
G <sub>r</sub>	0 - 0,035	Radial Clearance
G <sub>rmin</sub>	0 mm	Radial clearance, minimum
G <sub>rmax</sub>	0,035 mm	Radial clearance, maximum

## Mounting dimensions

r <sub>1smin</sub>	0,3 mm	Edge Spacing
d <sub>1</sub>	10,3 mm	Outer flange diameter inner ring



### Temperature range


---


$T_{\min}$             -50 °C                            Operating temperature min.

$T_{\max}$             200 °C                            Operating temperature max.


### Characteristics


---

 Radial load

 Lifetime lubrication, freedom from maintenance

 Not sealed

 Static angular error and misalignment

 Dynamic angular error and misalignment