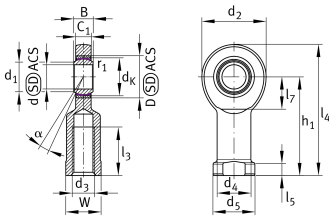


**GIL20-UK**

Rod end

Rod end with internal thread, maintenance-free, sliding layer: PTFE composite, DIN ISO 12240-4, dimension series E, type F, inner ring curved surface with hard chromium coating, open design, left hand thread

Technical information



Your current product variant

| | |
|--------------------|------------------------|
| Clampable | Not clampable |
| Maintenance | Maintenance free |
| Lubrication nipple | Cannot be relubricated |
| Slotted | No |
| Thread Pitch | Left-hand thread |
| Sealing | Without |
| Mounting | Internal thread |

Main Dimensions & Performance Data

| | | |
|-------------|----------|-----------------------------------|
| C_r | 31.300 N | Basic dynamic load rating, radial |
| C_{0r} | 75.600 N | Basic static load rating, radial |
| d | 20 mm | Bore diameter bearing |
| d_2 | 53 mm | Outer eye diameter |
| l_4 | 103,5 mm | Total length internal thread head |
| $\approx m$ | 0,35 kg | Weight |



Dimensions

| | | |
|-------------------|----------|--|
| C ₁ | 13 mm | Width of the rod end |
| D | 35 mm | Outside diameter bearing |
| B | 16 mm | Width inner ring |
| d _K | 29 mm | Ball diameter |
| d ₃ | M20x1,5 | Thread size |
| d ₄ | 27,5 mm | Shank diameter |
| d ₅ | 35 mm | Shank diameter, large |
| h ₁ | 77 mm | Shank Length Internal thread head |
| α | 9 ° | Tilt angle |
| l ₃ | 40 mm | Thread length Internal thread |
| l ₅ | 10 mm | Length rod end shank |
| l ₇ | 27 mm | Distance drilling with/shaft start |
| W | 32 mm | Width Across Flat |
| d _{UT} | -0,01 mm | Bore diameter bearing, lower tolerance |
| d _{OT} | 0 mm | Bore diameter bearing, upper tolerance |
| B _{UT} | -0,12 mm | Width inner ring, lower tolerance |
| B _{OT} | 0 mm | Width inner ring, upper tolerance |
| G _r | 0 - 0,04 | Radial Clearance |
| G _{rmin} | 0 mm | Radial clearance, minimum |
| G _{rmax} | 0,04 mm | Radial clearance, maximum |

Mounting dimensions

| | | |
|--------------------|---------|----------------------------------|
| r _{1smin} | 0,3 mm | Edge Spacing |
| d ₁ | 24,1 mm | Outer flange diameter inner ring |

Temperature range

| | | |
|------------------|--------|----------------------------|
| T _{min} | -50 °C | Operating temperature min. |
| T _{max} | 200 °C | Operating temperature max. |



Characteristics



Radial load



Lifetime lubrication, freedom from maintenance



Not sealed



Static angular error and misalignment



Dynamic angular error and misalignment