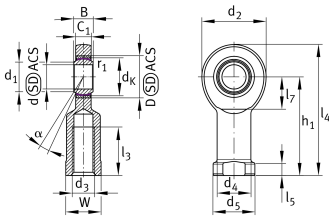


**GIL30-UK**

Rod end

Rod end with internal thread, maintenance-free, sliding layer: PTFE composite, DIN ISO 12240-4, dimension series E, type F, inner ring curved surface with hard chromium coating, open design, left hand thread

Technical information



Your current product variant

Clampable	Not clampable
Maintenance	Maintenance free
Mounting	Internal thread
Lubrication nipple	Cannot be relubricated
Slotted	No
Thread Pitch	Left-hand thread
Type of Seal	Without

Main Dimensions & Performance Data

C_r	65.900 N	Basic dynamic load rating, radial
C_{0r}	139.000 N	Basic static load rating, radial
d	30 mm	Bore diameter bearing
d_2	73 mm	Outer eye diameter
l_4	146,5 mm	Total length internal thread head
$\approx m$	0,98 kg	Weight



Dimensions

C ₁	19 mm	Width of the rod end
D	47 mm	Outside diameter bearing
B	22 mm	Width inner ring
d _K	40,7 mm	Ball diameter
d ₃	M30x2	Thread size
d ₄	40 mm	Shank diameter
d ₅	50 mm	Shank diameter, large
h ₁	110 mm	Shank Length Internal thread head
α	6 °	Tilt angle
l ₃	56 mm	Thread length Internal thread
l ₅	15 mm	Length rod end shank
l ₇	37 mm	Distance drilling with/shaft start
W	41 mm	Width Across Flat
d _{UT}	-0,01 mm	Bore diameter bearing, lower tolerance
d _{OT}	0 mm	Bore diameter bearing, upper tolerance
B _{UT}	-0,12 mm	Width inner ring, lower tolerance
B _{OT}	0 mm	Width inner ring, upper tolerance
G _r	0 - 0,05	Radial Clearance
G _{rmin}	0 mm	Radial clearance, minimum
G _{rmax}	0,05 mm	Radial clearance, maximum

Mounting dimensions

r _{1smin}	0,6 mm	Edge Spacing
d ₁	34,2 mm	Outer flange diameter inner ring

Temperature range

T _{min}	-50 °C	Operating temperature min.
T _{max}	200 °C	Operating temperature max.



Characteristics



Radial load



Lifetime lubrication, freedom from maintenance



Not sealed



Static angular error and misalignment



Dynamic angular error and misalignment