

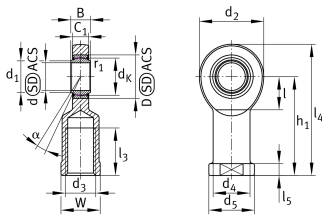
**GIL25-UK-2RS**

## Rod end



Rod end with internal thread, maintenance-free, sliding layer: ELGOGLIDE, DIN ISO 12240-4, dimension series E, type F, inner ring curved surface with hard chromium coating, sealed, left hand thread

## Technical information



## Your current product variant

Clampable	Not clampable	
Maintenance	Maintenance free	
Lubrication nipple	Cannot be relubricated	
Slotted	No	
Thread Pitch	Left-hand thread	
Sealing	2RS	Lip seals on both sides
Mounting	Internal thread	

## Main Dimensions &amp; Performance Data

$C_r$	128.000 N	Basic dynamic load rating, radial
$C_{0r}$	105.000 N	Basic static load rating, radial
d	25 mm	Bore diameter bearing
$d_2$	64 mm	Outer eye diameter
$l_4$	126 mm	Total length internal thread head
$\approx m$	0,65 kg	Weight



## Dimensions

C <sub>1</sub>	17 mm	Width of the rod end
D	42 mm	Outside diameter bearing
B	20 mm	Width inner ring
d <sub>K</sub>	35,5 mm	Ball diameter
d <sub>3</sub>	M24x2	Thread size
d <sub>4</sub>	33,5 mm	Shank diameter
d <sub>5</sub>	42 mm	Shank diameter, large
h <sub>1</sub>	94 mm	Shank Length Internal thread head
α	7 °	Tilt angle
l <sub>3</sub>	48 mm	Thread length Internal thread
l <sub>5</sub>	12 mm	Length rod end shank
l <sub>7</sub>	32 mm	Distance drilling with/shaft start
W	36 mm	Width Across Flat
d <sub>UT</sub>	-0,01 mm	Bore diameter bearing, lower tolerance
d <sub>OT</sub>	0 mm	Bore diameter bearing, upper tolerance
B <sub>UT</sub>	-0,12 mm	Width inner ring, lower tolerance
B <sub>OT</sub>	0 mm	Width inner ring, upper tolerance
G <sub>r</sub>	0 - 0,05	Radial Clearance
G <sub>rmin</sub>	0 mm	Radial clearance, minimum
G <sub>rmax</sub>	0,05 mm	Radial clearance, maximum

## Mounting dimensions

r <sub>1smin</sub>	0,6 mm	Edge Spacing
d <sub>1</sub>	29,3 mm	Outer flange diameter inner ring

## Temperature range

T <sub>min</sub>	-30 °C	Operating temperature min.
T <sub>max</sub>	130 °C	Operating temperature max.



## Characteristics

---



Radial load



Lifetime lubrication, freedom from maintenance



Sealed on both sides



Static angular error and misalignment



Dynamic angular error and misalignment