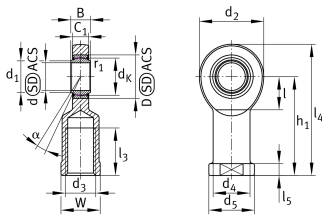


**GIL45-UK-2RS** [↗](#)

Rod end

Rod end with internal thread, maintenance-free, sliding layer: ELGOGLIDE, DIN ISO 12240-4, dimension series E, type F, inner ring curved surface with hard chromium coating, sealed, left hand thread

Technical information



Your current product variant

Clampable	Not clampable	
Maintenance	Maintenance free	
Mounting	Internal thread	
Lubrication nipple	Cannot be relubricated	
Slotted	No	
Thread Pitch	Left-hand thread	
Type of Sealing	2RS	Lip seals on both sides

Main Dimensions & Performance Data

C_r	360.000 N	Basic dynamic load rating, radial
C_{0r}	259.000 N	Basic static load rating, radial
d	45 mm	Bore diameter bearing
d_2	102 mm	Outer eye diameter
l_4	196 mm	Total length internal thread head
$\approx m$	2,7 kg	Weight



Dimensions

C ₁	27 mm	Width of the rod end
D	68 mm	Outside diameter bearing
B	32 mm	Width inner ring
d _K	60 mm	Ball diameter
d ₃	M42x3	Thread size
d ₄	58 mm	Shank diameter
d ₅	70 mm	Shank diameter, large
h ₁	145 mm	Shank Length Internal thread head
α	7 °	Tilt angle
l ₃	65 mm	Thread length Internal thread
l ₅	20 mm	Length rod end shank
l ₇	52 mm	Distance drilling with/shaft start
W	60 mm	Width Across Flat
d _{UT}	-0,012 mm	Bore diameter bearing, lower tolerance
d _{OT}	0 mm	Bore diameter bearing, upper tolerance
B _{UT}	-0,12 mm	Width inner ring, lower tolerance
B _{OT}	0 mm	Width inner ring, upper tolerance
G _r	0 - 0,06	Radial Clearance
G _{rmin}	0 mm	Radial clearance, minimum
G _{rmax}	0,06 mm	Radial clearance, maximum

Mounting dimensions

r _{1smin}	0,6 mm	Edge Spacing
d ₁	50,7 mm	Outer flange diameter inner ring

Temperature range

T _{min}	-30 °C	Operating temperature min.
T _{max}	130 °C	Operating temperature max.



Characteristics



Radial load



Lifetime lubrication, freedom from maintenance



Sealed on both sides



Static angular error and misalignment



Dynamic angular error and misalignment