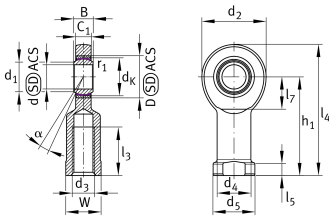


**GIR10-UK**

## Rod end

Rod end with internal thread, maintenance-free, sliding layer: PTFE composite, DIN ISO 12240-4, dimension series E, type F, inner ring curved surface with hard chromium coating, open design, right hand thread

## Technical information



## Your current product variant

Clampable	Not clampable
Maintenance	Maintenance free
Lubrication nipple	Cannot be relubricated
Slotted	No
Thread Pitch	Right-hand thread
Sealing	Without
Mounting	Internal thread

## Main Dimensions &amp; Performance Data

$C_r$	8.640 N	Basic dynamic load rating, radial
$C_{0r}$	22.000 N	Basic static load rating, radial
d	10 mm	Bore diameter bearing
$d_2$	29 mm	Outer eye diameter
$l_4$	57,5 mm	Total length internal thread head
$\approx m$	65,267 g	Weight



### Dimensions

C <sub>1</sub>	7 mm	Width of the rod end
D	19 mm	Outside diameter bearing
B	9 mm	Width inner ring
d <sub>K</sub>	16 mm	Ball diameter
d <sub>3</sub>	M10	Thread size
d <sub>4</sub>	15 mm	Shank diameter
d <sub>5</sub>	19 mm	Shank diameter, large
h <sub>1</sub>	43 mm	Shank Length Internal thread head
α	12 °	Tilt angle
l <sub>3</sub>	20 mm	Thread length Internal thread
l <sub>5</sub>	6,5 mm	Length rod end shank
l <sub>7</sub>	15 mm	Distance drilling with/shaft start
W	17 mm	Width Across Flat
d <sub>UT</sub>	-0,008 mm	Bore diameter bearing, lower tolerance
d <sub>OT</sub>	0 mm	Bore diameter bearing, upper tolerance
B <sub>UT</sub>	-0,12 mm	Width inner ring, lower tolerance
B <sub>OT</sub>	0 mm	Width inner ring, upper tolerance
G <sub>r</sub>	0 - 0,032	Radial Clearance
G <sub>rmin</sub>	0 mm	Radial clearance, minimum
G <sub>rmax</sub>	0,032 mm	Radial clearance, maximum

### Mounting dimensions

r <sub>1smin</sub>	0,3 mm	Edge Spacing
d <sub>1</sub>	13,2 mm	Outer flange diameter inner ring

### Temperature range

T <sub>min</sub>	-50 °C	Operating temperature min.
T <sub>max</sub>	200 °C	Operating temperature max.



### Characteristics

---



Radial load



Lifetime lubrication, freedom from maintenance



Not sealed



Static angular error and misalignment



Dynamic angular error and misalignment