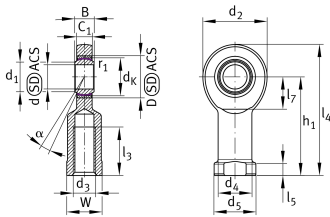


**GIR20-UK**

## Rod end

Rod end with internal thread, maintenance-free, sliding layer: PTFE composite, DIN ISO 12240-4, dimension series E, type F, inner ring curved surface with hard chromium coating, open design, right hand thread

## Technical information



## Your current product variant

|                    |                        |
|--------------------|------------------------|
| Clampable          | Not clampable          |
| Maintenance        | Maintenance free       |
| Lubrication nipple | Cannot be relubricated |
| Slotted            | No                     |
| Thread Pitch       | Right-hand thread      |
| Sealing            | Without                |
| Mounting           | Internal thread        |

## Main Dimensions &amp; Performance Data

|             |          |                                   |
|-------------|----------|-----------------------------------|
| $C_r$       | 31.300 N | Basic dynamic load rating, radial |
| $C_{0r}$    | 75.600 N | Basic static load rating, radial  |
| d           | 20 mm    | Bore diameter bearing             |
| $d_2$       | 53 mm    | Outer eye diameter                |
| $l_4$       | 103,5 mm | Total length internal thread head |
| $\approx m$ | 0,331 kg | Weight                            |



## Dimensions

|                   |          |  |
|-------------------|----------|--|
| C <sub>1</sub>    | 13 mm    | Width of the rod end                   |
| D                 | 35 mm    | Outside diameter bearing               |
| B                 | 16 mm    | Width inner ring                       |
| d <sub>K</sub>    | 29 mm    | Ball diameter                          |
| d <sub>3</sub>    | M20x1,5  | Thread size                            |
| d <sub>4</sub>    | 27,5 mm  | Shank diameter                         |
| d <sub>5</sub>    | 35 mm    | Shank diameter, large                  |
| h <sub>1</sub>    | 77 mm    | Shank Length Internal thread head      |
| α                 | 9 °      | Tilt angle                             |
| l <sub>3</sub>    | 40 mm    | Thread length Internal thread          |
| l <sub>5</sub>    | 10 mm    | Length rod end shank                   |
| l <sub>7</sub>    | 27 mm    | Distance drilling with/shaft start     |
| W                 | 32 mm    | Width Across Flat                      |
| d <sub>UT</sub>   | -0,01 mm | Bore diameter bearing, lower tolerance |
| d <sub>OT</sub>   | 0 mm     | Bore diameter bearing, upper tolerance |
| B <sub>UT</sub>   | -0,12 mm | Width inner ring, lower tolerance      |
| B <sub>OT</sub>   | 0 mm     | Width inner ring, upper tolerance      |
| G <sub>r</sub>    | 0 - 0,04 | Radial Clearance                       |
| G <sub>rmin</sub> | 0 mm     | Radial clearance, minimum              |
| G <sub>rmax</sub> | 0,04 mm  | Radial clearance, maximum              |

## Mounting dimensions

|                    |         |                                  |
|--------------------|---------|----------------------------------|
| r <sub>1smin</sub> | 0,3 mm  | Edge Spacing                     |
| d <sub>1</sub>     | 24,1 mm | Outer flange diameter inner ring |

## Temperature range

|                  |        |                            |
|------------------|--------|----------------------------|
| T <sub>min</sub> | -50 °C | Operating temperature min. |
| T <sub>max</sub> | 200 °C | Operating temperature max. |



### Characteristics

---



Radial load



Lifetime lubrication, freedom from maintenance



Not sealed



Static angular error and misalignment



Dynamic angular error and misalignment