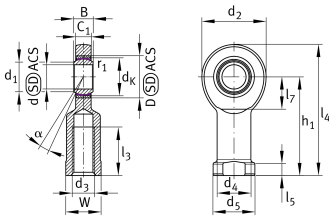


**GIR25-UK** [↗](#)

Rod end

Rod end with internal thread, maintenance-free, sliding layer: PTFE composite, DIN ISO 12240-4, dimension series E, type F, inner ring curved surface with hard chromium coating, open design, right hand thread

Technical information

**Your current product variant**

Clampable	Not clampable
Maintenance	Maintenance free
Lubrication nipple	Cannot be relubricated
Slotted	No
Thread Pitch	Right-hand thread
Sealing	Without
Mounting	Internal thread

Main Dimensions & Performance Data

C_r	51.100 N	Basic dynamic load rating, radial
C_{0r}	105.000 N	Basic static load rating, radial
d	25 mm	Bore diameter bearing
d_2	64 mm	Outer eye diameter
l_4	126 mm	Total length internal thread head
$\approx m$	628 g	Weight



Dimensions

C ₁	17 mm	Width of the rod end
D	42 mm	Outside diameter bearing
B	20 mm	Width inner ring
d _K	35,5 mm	Ball diameter
d ₃	M24x2	Thread size
d ₄	33,5 mm	Shank diameter
d ₅	42 mm	Shank diameter, large
h ₁	94 mm	Shank Length Internal thread head
α	7 °	Tilt angle
l ₃	48 mm	Thread length Internal thread
l ₅	12 mm	Length rod end shank
l ₇	32 mm	Distance drilling with/shaft start
W	36 mm	Width Across Flat
d _{UT}	-0,01 mm	Bore diameter bearing, lower tolerance
d _{OT}	0 mm	Bore diameter bearing, upper tolerance
B _{UT}	-0,12 mm	Width inner ring, lower tolerance
B _{OT}	0 mm	Width inner ring, upper tolerance
G _r	0 - 0,05	Radial Clearance
G _{rmin}	0 mm	Radial clearance, minimum
G _{rmax}	0,05 mm	Radial clearance, maximum

Mounting dimensions

r _{1smin}	0,6 mm	Edge Spacing
d ₁	29,3 mm	Outer flange diameter inner ring

Temperature range

T _{min}	-50 °C	Operating temperature min.
T _{max}	200 °C	Operating temperature max.



Characteristics



Radial load



Lifetime lubrication, freedom from maintenance



Not sealed



Static angular error and misalignment



Dynamic angular error and misalignment