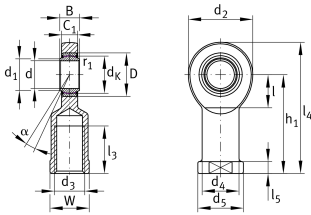


**GIR35-UK-2RS**

Rod end

Rod end with internal thread, maintenance-free, sliding layer: ELGOGLIDE, DIN ISO 12240-4, dimension series E, type F, inner ring curved surface with hard chromium coating, sealed, right hand thread

Technical information



Your current product variant

| | | |
|--------------------|------------------------|-------------------------|
| Clampable | Not clampable | |
| Maintenance | Maintenance free | |
| Mounting | Internal thread | |
| Lubrication nipple | Cannot be relubricated | |
| Slotted | No | |
| Thread Pitch | Right-hand thread | |
| Type of Sealing | 2RS | Lip seals on both sides |

Main Dimensions & Performance Data

| | | |
|-------------|-----------|-----------------------------------|
| C_r | 212.000 N | Basic dynamic load rating, radial |
| C_{0r} | 159.000 N | Basic static load rating, radial |
| d | 35 mm | Bore diameter bearing |
| d_2 | 82 mm | Outer eye diameter |
| l_4 | 166 mm | Total length internal thread head |
| $\approx m$ | 1,367 kg | Weight |



Dimensions

| | | |
|-------------------|-----------|--|
| C ₁ | 21 mm | Width of the rod end |
| D | 55 mm | Outside diameter bearing |
| B | 25 mm | Width inner ring |
| d _K | 47 mm | Ball diameter |
| d ₃ | M36x3 | Thread size |
| d ₄ | 47 mm | Shank diameter |
| d ₅ | 58 mm | Shank diameter, large |
| h ₁ | 125 mm | Shank Length Internal thread head |
| α | 6 ° | Tilt angle |
| l ₃ | 60 mm | Thread length Internal thread |
| l ₅ | 15 mm | Length rod end shank |
| l ₇ | 42 mm | Distance drilling with/shaft start |
| W | 50 mm | Width Across Flat |
| d _{UT} | -0,012 mm | Bore diameter bearing, lower tolerance |
| d _{OT} | 0 mm | Bore diameter bearing, upper tolerance |
| B _{UT} | -0,12 mm | Width inner ring, lower tolerance |
| B _{OT} | 0 mm | Width inner ring, upper tolerance |
| G _r | 0 - 0,05 | Radial Clearance |
| G _{rmin} | 0 mm | Radial clearance, minimum |
| G _{rmax} | 0,05 mm | Radial clearance, maximum |

Mounting dimensions

| | | |
|--------------------|---------|----------------------------------|
| r _{1smin} | 0,6 mm | Edge Spacing |
| d ₁ | 39,7 mm | Outer flange diameter inner ring |

Temperature range

| | | |
|------------------|--------|----------------------------|
| T _{min} | -30 °C | Operating temperature min. |
| T _{max} | 130 °C | Operating temperature max. |



Characteristics



Radial load



Axial load in one direction



Axial load in two directions



Lifetime lubrication, freedom from maintenance



Sealed on both sides



Static angular error and misalignment



Dynamic angular error and misalignment