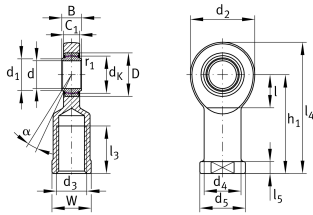


**GIR60-UK-2RS**

## Rod end

Rod end with internal thread, maintenance-free, sliding layer: ELGOGLIDE, DIN ISO 12240-4, dimension series E, type F, inner ring curved surface with hard chromium coating, sealed, right hand thread

## Technical information



## Your current product variant

Clampable	Not clampable	
Maintenance	Maintenance free	
Mounting	Internal thread	
Lubrication nipple	Cannot be relubricated	
Slotted	No	
Thread Pitch	Right-hand thread	
Type of Sealing	2RS	Lip seals on both sides

## Main Dimensions &amp; Performance Data

$C_r$	691.000 N	Basic dynamic load rating, radial
$C_{0r}$	485.000 N	Basic static load rating, radial
d	60 mm	Bore diameter bearing
$d_2$	135 mm	Outer eye diameter
$l_4$	242,5 mm	Total length internal thread head
$\approx m$	5,6 kg	Weight



## Dimensions

C <sub>1</sub>	38 mm	Width of the rod end
D	90 mm	Outside diameter bearing
B	44 mm	Width inner ring
d <sub>K</sub>	80 mm	Ball diameter
d <sub>3</sub>	M52x3	Thread size
d <sub>4</sub>	70 mm	Shank diameter
d <sub>5</sub>	88 mm	Shank diameter, large
h <sub>1</sub>	175 mm	Shank Length Internal thread head
α	6 °	Tilt angle
l <sub>3</sub>	70 mm	Thread length Internal thread
l <sub>5</sub>	20 mm	Length rod end shank
l <sub>7</sub>	75 mm	Distance drilling with/shaft start
W	75 mm	Width Across Flat
d <sub>UT</sub>	-0,015 mm	Bore diameter bearing, lower tolerance
d <sub>OT</sub>	0 mm	Bore diameter bearing, upper tolerance
B <sub>UT</sub>	-0,15 mm	Width inner ring, lower tolerance
B <sub>OT</sub>	0 mm	Width inner ring, upper tolerance
G <sub>r</sub>	0 - 0,06	Radial Clearance
G <sub>rmin</sub>	0 mm	Radial clearance, minimum
G <sub>rmax</sub>	0,06 mm	Radial clearance, maximum

## Mounting dimensions

r <sub>1smin</sub>	1 mm	Edge Spacing
d <sub>1</sub>	66,8 mm	Outer flange diameter inner ring

## Temperature range

T <sub>min</sub>	-30 °C	Operating temperature min.
T <sub>max</sub>	130 °C	Operating temperature max.



## Characteristics

---



Radial load



Axial load in one direction



Axial load in two directions



Lifetime lubrication, freedom from maintenance



Sealed on both sides



Static angular error and misalignment



Dynamic angular error and misalignment