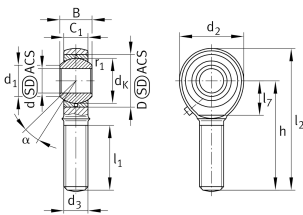


**GAKL12-PB** [↗](#)

## Rod end

Rod end with external thread, left hand thread, requiring maintenance, sliding contact surface: steel/bronze, DIN ISO 12240-4, dimension series K, type M, open design

## Technical information



## Your current product variant

Clampable	Not clampable
Maintenance	Maintenance required
Mounting	External thread
Lubrication nipple	DIN3405 (funnel-type grease nipple)
Slotted	No
Thread Pitch	Left-hand thread
Type of Sealing	Without

## Main Dimensions &amp; Performance Data

$C_r$	13.300 N	Basic dynamic load rating, radial
$C_{0r}$	20.800 N	Basic static load rating, radial
d	12 mm	Bore diameter bearing
D	26 mm	Outside diameter bearing
$l_2$	70 mm	Total length external thread head
B	16 mm	Width inner ring
$d_2$	32 mm	Outer eye diameter
$m$	0,102 kg	Weight



### Mounting dimensions

d <sub>1</sub>	15,4 mm	Outer flange diameter inner ring
r <sub>1smin</sub>	0,3 mm	Edge Spacing

### Dimensions

d <sub>K</sub>	22,225 mm	Ball diameter
d <sub>3</sub>	M12	Thread size
h	54 mm	Shank Length External thread rod
C <sub>1</sub>	12 mm	Width of the rod end
α	13 °	Tilt angle
l <sub>1</sub>	32 mm	Shank Length External thread head
d <sub>OT</sub>	0,018 mm	Bore diameter bearing, upper tolerance
d <sub>UT</sub>	0 mm	Bore diameter bearing, lower tolerance
d <sub>T</sub>	H7	Bore diameter bearing, tolerance
B <sub>OT</sub>	0 mm	Width inner ring, upper tolerance
B <sub>UT</sub>	-0,12 mm	Width inner ring, lower tolerance
G <sub>r</sub>	0 - 0,035	Radial Clearance
G <sub>rmax</sub>	0,035 mm	Radial clearance, maximum
G <sub>rmin</sub>	0 mm	Radial clearance, minimum

### Temperature range

T <sub>min</sub>	-60 °C	Operating temperature min.
T <sub>max</sub>	250 °C	Operating temperature max.



### Characteristics

---



Radial load



Grease Lubrication



Not sealed



Static angular error and misalignment



Dynamic angular error and misalignment