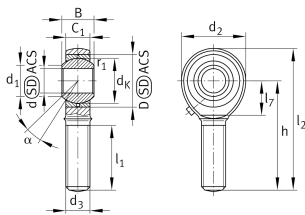


**GAKL14-PB** [↗](#)

Rod end

Rod end with external thread, left hand thread, requiring maintenance, sliding contact surface: steel/bronze, DIN ISO 12240-4, dimension series K, type M, open design

Technical information



Your current product variant

Clampable	Not clampable
Maintenance	Maintenance required
Mounting	External thread
Lubrication nipple	DIN3405 (funnel-type grease nipple)
Slotted	No
Thread Pitch	Left-hand thread
Type of Seal	Without

Main Dimensions & Performance Data

C_r	17.100 N	Basic dynamic load rating, radial
C_{0r}	32.000 N	Basic static load rating, radial
d	14 mm	Bore diameter bearing
D	28 mm	Outside diameter bearing
l_2	78 mm	Total length external thread head
B	19 mm	Width inner ring
d_2	36 mm	Outer eye diameter
m	0,16 kg	Weight



Mounting dimensions

d ₁	16,8 mm	Outer flange diameter inner ring
r _{1smin}	0,3 mm	Edge Spacing

Dimensions

d _K	25,4 mm	Ball diameter
d ₃	M14	Thread size
h	60 mm	Shank Length External thread rod
C ₁	13,5 mm	Width of the rod end
α	16 °	Tilt angle
l ₁	36 mm	Shank Length External thread head
l ₇	18 mm	Distance drilling with/shaft start
d _{OT}	0,018 mm	Bore diameter bearing, upper tolerance
d _{UT}	0 mm	Bore diameter bearing, lower tolerance
d _T	H7	Bore diameter bearing, tolerance
B _{OT}	0 mm	Width inner ring, upper tolerance
B _{UT}	-0,12 mm	Width inner ring, lower tolerance
G _r	0 - 0,035	Radial Clearance
G _{rmax}	0,035 mm	Radial clearance, maximum
G _{rmin}	0 mm	Radial clearance, minimum

Temperature range

T _{min}	-60 °C	Operating temperature min.
T _{max}	250 °C	Operating temperature max.



Characteristics



Radial load



Grease Lubrication



Not sealed



Static angular error and misalignment



Dynamic angular error and misalignment