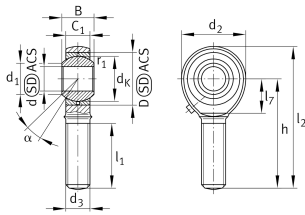


**GAKR12-PB** [↗](#)

Rod end

Rod end with external thread, right hand thread, requiring maintenance, sliding contact surface: steel/bronze, DIN ISO 12240-4, dimension series K, type M, open design

Technical information



Your current product variant

| | |
|--------------------|-------------------------------------|
| Clampable | Not clampable |
| Maintenance | Maintenance required |
| Lubrication nipple | DIN3405 (funnel-type grease nipple) |
| Slotted | No |
| Thread Pitch | Right-hand thread |
| Sealing | Without |
| Mounting | External thread |

Main Dimensions & Performance Data

| | | |
|----------|----------|-----------------------------------|
| C_r | 13.300 N | Basic dynamic load rating, radial |
| C_{0r} | 20.800 N | Basic static load rating, radial |
| d | 12 mm | Bore diameter bearing |
| D | 26 mm | Outside diameter bearing |
| l_2 | 70 mm | Total length external thread head |
| B | 16 mm | Width inner ring |
| d_2 | 32 mm | Outer eye diameter |
| m | 0,108 kg | Weight |



Mounting dimensions

| | | |
|--------------------|---------|----------------------------------|
| d ₁ | 15,4 mm | Outer flange diameter inner ring |
| r _{1smin} | 0,3 mm | Edge Spacing |

Dimensions

| | | |
|-------------------|-----------|--|
| d _K | 22,225 mm | Ball diameter |
| d ₃ | M12 | Thread size |
| h | 54 mm | Shank Length External thread rod |
| C ₁ | 12 mm | Width of the rod end |
| α | 13 ° | Tilt angle |
| l ₁ | 32 mm | Shank Length External thread head |
| d _{OT} | 0,018 mm | Bore diameter bearing, upper tolerance |
| d _{UT} | 0 mm | Bore diameter bearing, lower tolerance |
| d _T | H7 | Bore diameter bearing, tolerance |
| B _{OT} | 0 mm | Width inner ring, upper tolerance |
| B _{UT} | -0,12 mm | Width inner ring, lower tolerance |
| G _r | 0 - 0,035 | Radial Clearance |
| G _{rmax} | 0,035 mm | Radial clearance, maximum |
| G _{rmin} | 0 mm | Radial clearance, minimum |

Temperature range

| | | |
|------------------|--------|----------------------------|
| T _{min} | -60 °C | Operating temperature min. |
| T _{max} | 250 °C | Operating temperature max. |



Characteristics



Radial load



Grease Lubrication



Not sealed



Static angular error and misalignment



Dynamic angular error and misalignment