

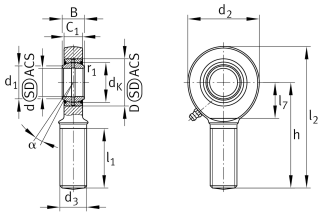
**GAL10-DO**

Rod end



Rod end with external thread, left hand thread, requiring maintenance, sliding contact surface: steel/steel, DIN ISO 12240-4, dimension series E, type M, open

Technical information

**Your current product variant**

Clampable	Not clampable	
Maintenance	Maintenance required	
Mounting	External thread	
Lubrication nipple	Cannot be relubricated	
Slotted	No	
Thread Pitch	Left-hand thread	
Type of Seal	Without	
Radial internal clearance	CN (Group N)	Normal internal clearance

Main Dimensions & Performance Data

C_r	10.600 N	Basic dynamic load rating, radial
C_{0r}	20.600 N	Basic static load rating, radial
d	10 mm	Bore diameter bearing
D	19 mm	Outside diameter bearing
l_2	62,5 mm	Total length external thread head
B	9 mm	Width inner ring
d_2	29 mm	Outer eye diameter
$\approx m$	52,976 g	Weight



Mounting dimensions

d ₁	13,2 mm	Outer flange diameter inner ring
r _{1smin}	0,3 mm	Edge Spacing

Dimensions

d _K	16 mm	Ball diameter
d ₃	M10	Thread size
h	48 mm	Shank Length External thread rod
C ₁	7 mm	Width of the rod end
α	12 °	Tilt angle
l ₁	26 mm	Shank Length External thread head
l ₇	15 mm	Distance drilling with/shaft start
d _{OT}	0 mm	Bore diameter bearing, upper tolerance
d _{UT}	-0,008 mm	Bore diameter bearing, lower tolerance
B _{OT}	0 mm	Width inner ring, upper tolerance
B _{UT}	-0,12 mm	Width inner ring, lower tolerance
G _r	0,023 - 0,068	Radial Clearance
G _{rmax}	0,068 mm	Radial clearance, maximum
G _{rmin}	0,023 mm	Radial clearance, minimum

Temperature range

T _{min}	-60 °C	Operating temperature min.
T _{max}	200 °C	Operating temperature max.



Characteristics



Radial load



Grease Lubrication



Not sealed



Static angular error and misalignment



Dynamic angular error and misalignment