

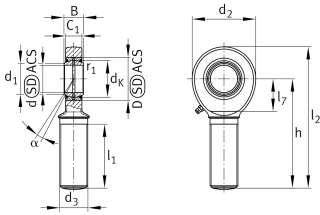
**GAL25-DO-2RS** [↗](#)

Rod end



Rod end with external thread, left hand thread, requiring maintenance, sliding contact surface: steel/steel, DIN ISO 12240-4, dimension series E, type M, sealed design

Technical information



Your current product variant

Clampable	Not clampable	
Maintenance	Maintenance required	
Mounting	External thread	
Lubrication nipple	DIN71412-AS6 (tapered grease nipple)	
Slotted	No	
Thread Pitch	Left-hand thread	
Type of Sealing	2RS	Lip seals on both sides
Radial internal clearance	CN (Group N)	Normal internal clearance

Main Dimensions & Performance Data

C_r	62.800 N	Basic dynamic load rating, radial
C_{0r}	88.300 N	Basic static load rating, radial
d	25 mm	Bore diameter bearing
D	42 mm	Outside diameter bearing
l_2	126 mm	Total length external thread head
B	20 mm	Width inner ring
d_2	64 mm	Outer eye diameter
$\approx m$	0,6 kg	Weight



Mounting dimensions

d ₁	29,3 mm	Outer flange diameter inner ring
r _{1smin}	0,6 mm	Edge Spacing

Dimensions

d _K	35,5 mm	Ball diameter
d ₃	M24x2	Thread size
h	94 mm	Shank Length External thread rod
C ₁	17 mm	Width of the rod end
α	7 °	Tilt angle
l ₁	53 mm	Shank Length External thread head
l ₇	32 mm	Distance drilling with/shaft start
d _{OT}	0 mm	Bore diameter bearing, upper tolerance
d _{UT}	-0,01 mm	Bore diameter bearing, lower tolerance
B _{OT}	0 mm	Width inner ring, upper tolerance
B _{UT}	-0,12 mm	Width inner ring, lower tolerance
G _r	0,037 - 0,1	Radial Clearance
G _{rmax}	0,1 mm	Radial clearance, maximum
G _{rmin}	0,037 mm	Radial clearance, minimum

Temperature range

T _{min}	-30 °C	Operating temperature min.
T _{max}	130 °C	Operating temperature max.



Characteristics



Radial load



Grease Lubrication



Sealed on both sides



Static angular error and misalignment



Dynamic angular error and misalignment