

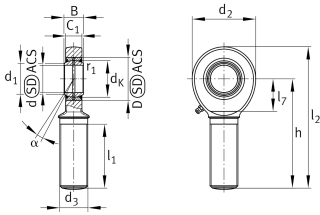
**GAR20-DO-2RS**

Rod end



Rod end with external thread, right hand thread, requiring maintenance, sliding contact surface: steel/steel, DIN ISO 12240-4, dimension series E, type M, sealed design

Technical information



Your current product variant

Clampable	Not clampable	
Maintenance	Maintenance required	
Mounting	External thread	
Lubrication nipple	Lubrication hole	
Slotted	No	
Thread Pitch	Right-hand thread	
Type of Seal	2RS	Lip seals on both sides
Radial internal clearance	CN (Group N)	Normal internal clearance

Main Dimensions & Performance Data

C_r	38.500 N	Basic dynamic load rating, radial
C_{0r}	75.600 N	Basic static load rating, radial
d	20 mm	Bore diameter bearing
D	35 mm	Outside diameter bearing
l_2	104,5 mm	Total length external thread head
B	16 mm	Width inner ring
d_2	53 mm	Outer eye diameter
$\approx m$	330 g	Weight



Mounting dimensions

d ₁	24,2 mm	Outer flange diameter inner ring
r _{1smin}	0,3 mm	Edge Spacing

Dimensions



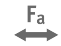




d _K	29 mm	Ball diameter
d ₃	M20x1,5	Thread size
h	78 mm	Shank Length External thread rod
C ₁	13 mm	Width of the rod end
α	9 °	Tilt angle
l ₁	43 mm	Shank Length External thread head
l ₇	27 mm	Distance drilling with/shaft start
d _{OT}	0 mm	Bore diameter bearing, upper tolerance
d _{UT}	-0,01 mm	Bore diameter bearing, lower tolerance
B _{OT}	0 mm	Width inner ring, upper tolerance
B _{UT}	-0,12 mm	Width inner ring, lower tolerance
G _r	0,030 - 0,082	Radial Clearance
G _{rmax}	0,082 mm	Radial clearance, maximum
G _{rmin}	0,03 mm	Radial clearance, minimum

Temperature range

T _{min}	-30 °C	Operating temperature min.
T _{max}	130 °C	Operating temperature max.



Characteristics

-  Radial load
-  Axial load in one direction
-  Axial load in two directions
-  Grease Lubrication
-  Sealed on both sides
-  Static angular error and misalignment
-  Dynamic angular error and misalignment