

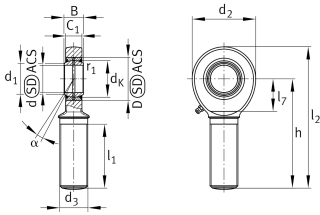
**GAR45-DO-2RS**

Rod end



Rod end with external thread, right hand thread, requiring maintenance, sliding contact surface: steel/steel, DIN ISO 12240-4, dimension series E, type M, sealed design

Technical information



Your current product variant

Clampable	Not clampable	
Maintenance	Maintenance required	
Mounting	External thread	
Lubrication nipple	DIN71412-AS6 (tapered grease nipple)	
Slotted	No	
Thread Pitch	Right-hand thread	
Type of Seal	2RS	Lip seals on both sides
Radial internal clearance	CN (Group N)	Normal internal clearance

Main Dimensions & Performance Data

C_r	166.000 N	Basic dynamic load rating, radial
C_{0r}	259.000 N	Basic static load rating, radial
d	45 mm	Bore diameter bearing
D	68 mm	Outside diameter bearing
l_2	214 mm	Total length external thread head
B	32 mm	Width inner ring
d_2	102 mm	Outer eye diameter
$\approx m$	2,66 kg	Weight



Mounting dimensions

d ₁	50,7 mm	Outer flange diameter inner ring
r _{1smin}	0,6 mm	Edge Spacing

Dimensions








d _K	60 mm	Ball diameter
d ₃	M42x3	Thread size
h	163 mm	Shank Length External thread rod
C ₁	27 mm	Width of the rod end
α	7 °	Tilt angle
l ₁	94 mm	Shank Length External thread head
l ₇	52 mm	Distance drilling with/shaft start
d _{OT}	0 mm	Bore diameter bearing, upper tolerance
d _{UT}	-0,012 mm	Bore diameter bearing, lower tolerance
B _{OT}	0 mm	Width inner ring, upper tolerance
B _{UT}	-0,12 mm	Width inner ring, lower tolerance
G _r	0,043 - 0,12	Radial Clearance
G _{rmax}	0,12 mm	Radial clearance, maximum
G _{rmin}	0,043 mm	Radial clearance, minimum

Temperature range

T _{min}	-30 °C	Operating temperature min.
T _{max}	130 °C	Operating temperature max.



Characteristics

-  Radial load
-  Axial load in one direction
-  Axial load in two directions
-  Grease Lubrication
-  Sealed on both sides
-  Static angular error and misalignment
-  Dynamic angular error and misalignment