

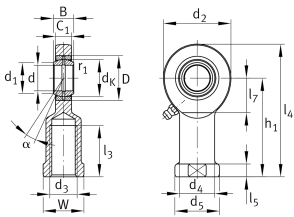
**GIR15-DO**

## Rod end



Rod end with internal thread, right hand thread, requiring maintenance, sliding contact surface: steel/steel, DIN ISO 12240-4, dimension series E, type F, open design

## Technical information



## Your current product variant

|                           |                      |                           |
|---------------------------|----------------------|---------------------------|
| Clampable                 | Not clampable        |                           |
| Maintenance               | Maintenance required |                           |
| Mounting                  | Internal thread      |                           |
| Lubrication nipple        | Lubrication hole     |                           |
| Slotted                   | No                   |                           |
| Thread Pitch              | Right-hand thread    |                           |
| Type of Sealing           | Without              |                           |
| Radial internal clearance | CN (Group N)         | Normal internal clearance |

## Main Dimensions &amp; Performance Data

|                 |              |                                   |
|-----------------|--------------|-----------------------------------|
| d               | 15 mm        | Bore diameter bearing             |
| D               | 26 mm        | Outside diameter bearing          |
| B               | 12 mm        | Width inner ring                  |
| C <sub>r</sub>  | 21.900 N     | Basic dynamic load rating, radial |
| C <sub>0r</sub> | 44.800 N     | Basic static load rating, radial  |
| G <sub>r</sub>  | 0,03 - 0,082 | Radial Clearance                  |
| ≈m              | 0,166 kg     | Weight                            |



## Dimensions

|                    |           |  |
|--------------------|-----------|--|
| d <sub>K</sub>     | 22 mm     | Ball diameter                          |
| d <sub>1</sub>     | 18,4 mm   | Outer flange diameter inner ring       |
| d <sub>2</sub>     | 40 mm     | Outer eye diameter                     |
| d <sub>3</sub>     | M14       | Thread size                            |
| d <sub>4</sub>     | 21 mm     | Shank diameter                         |
| h <sub>1</sub>     | 61 mm     | Shank Length Internal thread head      |
| C <sub>1</sub>     | 10 mm     | Width of the rod end                   |
| α                  | 8 °       | Tilt angle                             |
| l <sub>3</sub>     | 30 mm     | Thread length Internal thread          |
| l <sub>4</sub>     | 81 mm     | Total length internal thread head      |
| l <sub>5</sub>     | 8 mm      | Length rod end shank                   |
| l <sub>7</sub>     | 20 mm     | Distance drilling with/shaft start     |
| d <sub>5</sub>     | 26 mm     | Shank diameter, large                  |
| r <sub>1smin</sub> | 0,3 mm    | Edge Spacing                           |
| W                  | 22 mm     | Width Across Flat                      |
| d <sub>OT</sub>    | 0 mm      | Bore diameter bearing, upper tolerance |
| d <sub>UT</sub>    | -0,008 mm | Bore diameter bearing, lower tolerance |
| B <sub>OT</sub>    | 0 mm      | Width inner ring, upper tolerance      |
| B <sub>UT</sub>    | -0,12 mm  | Width inner ring, lower tolerance      |
| G <sub>rmax</sub>  | 0,082 mm  | Radial clearance, maximum              |
| G <sub>rmin</sub>  | 0,03 mm   | Radial clearance, minimum              |

## Temperature range

|                  |        |                            |
|------------------|--------|----------------------------|
| T <sub>min</sub> | -60 °C | Operating temperature min. |
| T <sub>max</sub> | 200 °C | Operating temperature max. |



### Characteristics

---



Radial load



Grease Lubrication



Not sealed



Static angular error and misalignment



Dynamic angular error and misalignment