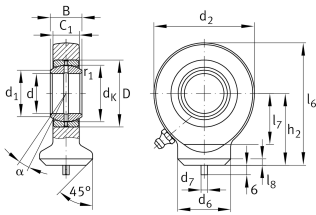


**GK30-DO**

Rod end

Hydraulic rod end according to ISO24652 and DIN ISO 12240-4, dimension series E, form S with circular weld end, maintenance required, sliding pair steel/steel, open

Technical information

**Your current product variant**

| | |
|--------------------|--------------------------------------|
| Clampable | Not clampable |
| Maintenance | Maintenance required |
| Mounting | Weldable, round |
| Lubrication nipple | DIN71412-AS6 (tapered grease nipple) |
| Slotted | No |

Main Dimensions & Performance Data

| | | |
|-------------|----------|-----------------------------------|
| C_r | 81.000 N | Basic dynamic load rating, radial |
| C_{0r} | 95.700 N | Basic static load rating, radial |
| d | 30 mm | Bore diameter bearing |
| d_2 | 73 mm | Outer eye diameter |
| l_6 | 87,5 mm | Total length welding head |
| D | 47 mm | Outside diameter bearing |
| B | 22 mm | Width inner ring, |
| $\approx m$ | 0,635 kg | Weight |



Dimensions

| | | |
|-------------------|-------------|--|
| α | 6 ° | Tilt angle |
| C ₁ | 19 mm | Width of the rod end |
| d _K | 40,7 mm | Ball diameter |
| d ₆ | 40 mm | Welding Shank Diameter |
| d ₇ | 4 mm | Centering pin diameter |
| h ₂ | 51 mm | Shank Length Welding Head |
| l ₇ | 37 mm | Distance drilling with/shaft start |
| l ₈ | 4 mm | Chamfer |
| d _{UT} | -0,01 mm | Bore diameter bearing, lower tolerance |
| d _{OT} | 0 mm | Bore diameter bearing, upper tolerance |
| B _{UT} | -0,12 mm | Width inner ring, lower tolerance |
| B _{OT} | 0 mm | Width inner ring, upper tolerance |
| G _{rmax} | 0,1 mm | Radial clearance, maximum |
| G _{rmin} | 0,037 mm | Radial clearance, minimum |
| G _r | 0,037 - 0,1 | Radial Clearance |

Mounting dimensions

| | | |
|--------------------|---------|----------------------------------|
| r _{1smin} | 0,6 mm | Edge Spacing |
| d ₁ | 34,2 mm | Outer flange diameter inner ring |

Temperature range

| | | |
|------------------|--------|----------------------------|
| T _{min} | -60 °C | Operating temperature min. |
| T _{max} | 200 °C | Operating temperature max. |



Characteristics



Radial load



Axial load in one direction



Axial load in two directions



Grease Lubrication



Not sealed



Static angular error and misalignment



Dynamic angular error and misalignment