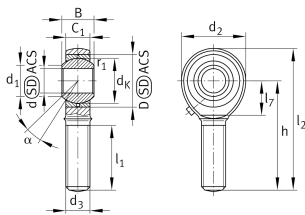


**GAKRB22-PC**

Rod end

Rod end with external thread, right hand thread, requiring maintenance, sliding contact surface: steel/bronze, DIN ISO 12240-4, dimension series K, type M, open design

Technical information



Your current product variant

Clampable	Not clampable	
Maintenance	Maintenance required	
Mounting	External thread	
Lubrication nipple	DIN3405 (funnel-type grease nipple)	
Slotted	No	
Thread Pitch	Right-hand thread	
Type of Seal	Without	
Radial internal clearance	CN (Group N)	Normal internal clearance

Main Dimensions & Performance Data

C_r	35.800 N	Basic dynamic load rating, radial
C_{0r}	48.800 N	Basic static load rating, radial
d	22 mm	Bore diameter bearing
D	42 mm	Outside diameter bearing
l_2	111,5 mm	Total length external thread head
B	28 mm	Width inner ring
d_2	55 mm	Outer eye diameter
$\approx m$	0,469 kg	Weight



Mounting dimensions

d ₁	25,8 mm	Outer flange diameter inner ring
r _{1smin}	0,3 mm	Edge Spacing

Dimensions

d _K	38,1 mm	Ball diameter
d ₃	M22X1,5	Thread size
h	84 mm	Shank Length External thread rod
C ₁	20 mm	Width of the rod end
α	15 °	Tilt angle
l ₁	48 mm	Shank Length External thread head
l ₇	26 mm	Distance drilling with/shaft start
d _{OT}	0,021 mm	Bore diameter bearing, upper tolerance
d _{UT}	0 mm	Bore diameter bearing, lower tolerance
d _T	H7	Bore diameter bearing, tolerance
B _{OT}	0 mm	Width inner ring, upper tolerance
B _{UT}	-0,12 mm	Width inner ring, lower tolerance
G _r	0,01 - 0,055	Radial Clearance
G _{rmax}	0,055 mm	Radial clearance, maximum
G _{rmin}	0,01 mm	Radial clearance, minimum

Temperature range

T _{min}	-60 °C	Operating temperature min.
T _{max}	250 °C	Operating temperature max.



Characteristics



Radial load



Axial load in one direction



Axial load in two directions



Grease Lubrication



Not sealed



Static angular error and misalignment



Dynamic angular error and misalignment