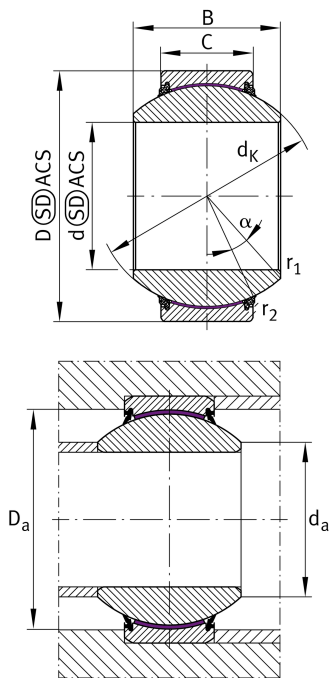


**GE100-FW-2TS** [↗](#)

## Spherical plain bearing

Radial spherical plain bearing, maintenance-free, sliding layer: ELGOGLIDE, inner ring curved surface with hard chromium coating, DIN ISO 12240-1, dimension series G, sealed

## Technical information



## Your current product variant

Maintenance	Maintenance free	
Type of Seal	2TS	Integrated triple lip high performance seals on both sides
Bore lining	Without	
Coating	Without	
Fabric	ELGOGLIDE	
Material	Steel	

## Main Dimensions &amp; Performance Data

d	100 mm	Bore diameter bearing
C <sub>r</sub>	1.850.000 N	Basic dynamic load rating, radial
D	160 mm	Outside diameter bearing
B	85 mm	Width inner ring
C	55 mm	Width Outer ring
C <sub>0r</sub>	3.080.000 N	Basic static load rating, radial
≈m	5,95 kg	Weight

## Mounting dimensions

r <sub>1smin</sub>	1 mm	Edge Spacing
r <sub>2smin</sub>	1 mm	Edge Spacing
D <sub>amin</sub>	134 mm	Housing Connection Diameter
d <sub>amax</sub>	111,2 mm	Connection measurement, inner ring




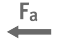




## Dimensions

$d_K$	140 mm	Ball diameter
$\alpha$	14 °	Tilt angle
$D_{OT}$	0 mm	Outside diameter, upper tolerance
$D_{UT}$	-0,025 mm	Outside diameter, lower tolerance
$B_{OT}$	0 mm	Width inner ring, upper tolerance
$d_{UT}$	-0,02 mm	Bore diameter bearing, lower tolerance
$B_{UT}$	-0,2 mm	Width inner ring, lower tolerance
$d_{OT}$	0 mm	Bore diameter bearing, upper tolerance
$C_{OT}$	0 mm	Width outer ring, upper tolerance
$C_{UT}$	-0,5 mm	Width outer ring, lower tolerance
$G_r$	0 - 0,085	Radial Clearance
$G_{rmax}$	0,085 mm	Radial clearance, maximum
$G_{rmin}$	0 mm	Radial clearance, minimum

## Temperature range

$T_{min}$	-30 °C	Operating temperature min.
$T_{max}$	100 °C	Operating temperature max.

## Characteristics

	Radial load
	Axial load in one direction
	Axial load in two directions
	Lifetime lubrication, freedom from maintenance
	Sealed on both sides
	Static angular error and misalignment