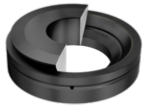


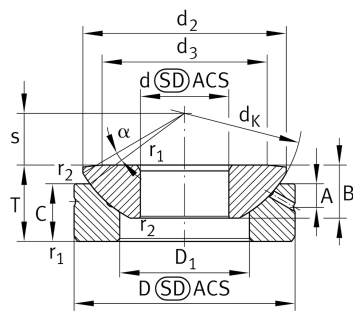
**GE12-AX**

Spherical plain bearing



Axial spherical plain bearing, requiring maintenance, sliding contact surface: steel/steel

Technical information

**Your current product variant**

Maintenance	Maintenance required
Coating	Durotect M Inner- and outer ring coated with Durotect M (Manganese Phosphate)

Main Dimensions & Performance Data

d	12 mm	Inner diameter bearing
D	35 mm	Outside diameter bearing
T	13 mm	Height
C _a	42.100 N	Basic dynamic load rating, axial
C _{0a}	162.000 N	Basic static load rating, axial
≈m	70,18 g	Weight

Mounting dimensions

r _{1smin}	0,6 mm	Edge Spacing
r _{2smin}	0,2 mm	Edge Spacing
d _{a max}	24 mm	Connection measure Inner ring
D _{a min}	21,5 mm	Housing Connection Diameter



Dimensions

d_K	37 mm	Ball diameter
d_3	24	Front surface diameter of shaft washer
D_1	19,5 mm	Inner diameter of housing washer
B	9,3 mm	Width Inner ring
C	9 mm	Width Outer ring
s	8 mm	Plane Surface Spacing
A	4 mm	Distance lubrication Bore
α	9 °	Tilt angle
d_{OT}	0 mm	Bore diameter bearing, upper tolerance
d_{UT}	-0,008 mm	Bore diameter bearing, lower tolerance
D_{OT}	0 mm	Outer diameter, upper tolerance
D_{UT}	-0,011 mm	Outside diameter, lower tolerance
T_{OT}	0 mm	Height, upper tolerance
T_{UT}	-0,4 mm	Height, lower tolerance
C_{UT}	0 mm	Width outer ring, upper tolerance
C_{OT}	-0,24 mm	Width outer ring, lower tolerance
B_{OT}	0 mm	Width inner ring, upper tolerance
B_{UT}	-0,24 mm	Width inner ring, lower tolerance
d_2	32 mm	Connection measure Inner ring

Temperature range

T_{min}	-60 °C	Operating temperature min.
T_{max}	200 °C	Operating temperature max.



Characteristics



Radial load



Axial load in one direction



Grease Lubrication



Not sealed



Static angular error and misalignment



Dynamic angular error and misalignment