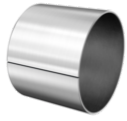


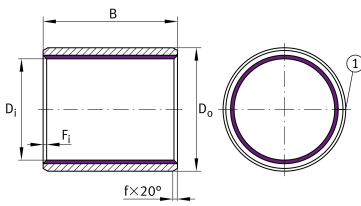
**EGB125100-E40**

Bush

Metal/polymer composite plain bush,
maintenance-free, ISO 3547, with steel
backing



Technical information



Your current product variant

Maintenance	Maintenance free	
Type of Sealing	Without	Not sealed
Material sliding Layer	E40	Maintenance-free sliding layer E40
Material back	Steel	

Main Dimensions & Performance Data

D_i	125 mm	Inner diameter
D_o	130 mm	Outer diameter
B	100 mm	Width
C_r	1.750.000 N	Basic dynamic load rating, radial
C_{0r}	3.130.000 N	Basic static load rating, radial
$\approx m$	0,754 kg	Weight



Dimensions

f	20 °	Chamfer angle outside diameter
f	1,8 mm	Outer chamfer
F _{i min}	0,2 mm	Inner edge break, min.
F _{i max}	1 mm	Inner edge break, max.
D _{o OT}	0,17 mm	Outside diameter, upper tolerance
D _{o UT}	0,1 mm	Outside diameter, lower tolerance
s ₃	2,5 mm	Wall thickness
s _{3 OT}	-0,035 mm	Wall thickness, upper tolerance
s _{3 UT}	-0,085 mm	Wall thickness, lower tolerance
B _{UT}	-0,25 mm	Width, lower tolerance
B _{OT}	0,25 mm	Width, upper tolerance
f _{OT}	0,6 mm	Outer chamfer, upper tolerance
f _{UT}	-0,6 mm	Outer chamfer, lower tolerance
F _i	0,2 mm	Inner edge break

Temperature range

T _{min}	-200 °C	Operating temperature min.
T _{max}	280 °C	Operating temperature max.

Characteristics



Radial load



Lifetime lubrication, freedom from maintenance



Not sealed



Small design envelope