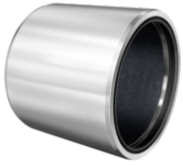
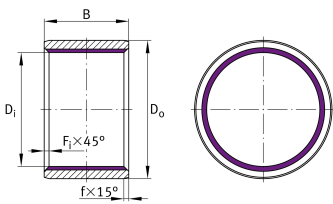


**ZGB200X230X180**

Bush

ELGOGLIDE plain bush, maintenance-free,
DIN ISO 4379

Technical information

**Your current product variant**

Maintenance	Maintenance free
Type of seal	Without Not sealed
Fabric	ELGOGLIDE
Material back	Steel

Main Dimensions & Performance Data

D_i	200 mm	Inner diameter
D_o	230 mm	Outer diameter
B	180 mm	Width
C_r	10.800.000 N	Basic dynamic load rating, radial
C_{0r}	10.800.000 N	Basic static load rating, radial
$\approx m$	13,6 kg	Weight



Dimensions

f	45 °	Chamfer angle bore diameter
f	15 °	Chamfer angle outside diameter
F _{iUT}	-0,7 mm	Inner edge break, lower tolerance
F _{iOT}	0,7 mm	Inner edge break, upper tolerance
f	5 mm	Outer chamfer
F _{i min}	0,8 mm	Inner edge break, min.
F _{i max}	2,2 mm	Inner edge break, max.
D _{iOT}	0,072 mm	Inner diameter, upper tolerance
D _{oOT}	0,096 mm	Outside diameter, upper tolerance
D _{iT}	H8	Inner diameter, tolerance
D _{oT}	p7	Outer diameter, tolerance
D _{iUT}	0 mm	Inner diameter, lower tolerance
D _{oUT}	0,05 mm	Outside diameter, lower tolerance
B _T	h12	Width tolerance
B _{UT}	-0,4 mm	Width, lower tolerance
B _{OT}	0 mm	Width, upper tolerance
f _{OT}	1,6 mm	Outer chamfer, upper tolerance
f _{UT}	-1,6 mm	Outer chamfer, lower tolerance
F _i	1,5 mm	Inner edge break

Temperature range

T _{min}	-50 °C	Operating temperature min.
T _{max}	150 °C	Operating temperature max.



Characteristics



Radial load



Lifetime lubrication, freedom from maintenance



Not sealed



Small design envelope