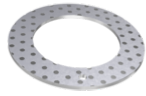




## EGW12-E50 [↗](#)

### Thrust washer



Thrust washer, low-maintenance, material in accordance with ISO 3547-4, with steel backing

## Technical information

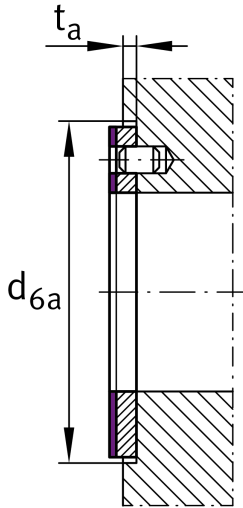


### Your current product variant

Maintenance	Low-maintenance
Material sliding Layer	E50
Material back	Steel

### Main Dimensions & Performance Data

$D_i$	12 mm	Inner diameter
$s_3$	1,5 mm	Wall thickness
$C_a$	23.800 N	Basic dynamic load rating, axial
$C_{0a}$	47.500 N	Basic static load rating, axial
$D_o$	24 mm	Outer Diameter
$\approx m$	2,63 g	Weight



### Dimensions

J	18 mm	Pitch circle
d <sub>1</sub>	1,5 mm	Fixing hole diameter
t <sub>a</sub>	1 mm	Mounting dimension
d <sub>6a</sub>	24 mm	Mounting dimension d <sub>6a</sub>
D <sub>o UT</sub>	-0,25 mm	Outside diameter, lower tolerance
D <sub>i OT</sub>	0,25 mm	Inner diameter, upper tolerance
D <sub>i UT</sub>	0 mm	Inner diameter, lower tolerance
D <sub>o OT</sub>	0 mm	Outside diameter, upper tolerance
s <sub>3 OT</sub>	0 mm	Wall thickness, upper tolerance
s <sub>3 UT</sub>	-0,05 mm	Wall thickness, lower tolerance
J <sub>OT</sub>	0,12 mm	Pitch circle, upper tolerance
J <sub>UT</sub>	0,12 mm	Pitch circle, lower tolerance
d <sub>1 OT</sub>	0,4 mm	Fixing hole diameter, upper tolerance
d <sub>1 UT</sub>	0,1 mm	Fixing hole diameter, lower tolerance
t <sub>a OT</sub>	0,2 mm	Mounting dimension, upper tolerance
t <sub>a UT</sub>	0,2 mm	Mounting dimension, lower tolerance
d <sub>6a OT</sub>	0,12 mm	Mounting dimension d <sub>6a</sub> , upper tolerance
d <sub>6a UT</sub>	0 mm	Mounting dimension d <sub>6a</sub> , lower tolerance

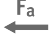
### Temperature range


T <sub>min</sub>	-40 °C	Operating temperature min.
T <sub>max</sub>	110 °C	Operating temperature max.



### Characteristics

---

 Axial load in one direction

 Grease Lubrication

 Not sealed

 Small design envelope