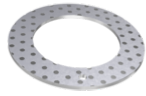


**EGW22-E50**

Thrust washer



Thrust washer, low-maintenance, material in accordance with ISO 3547-4, with steel backing

Technical information



Your current product variant

| | |
|------------------------|-----------------|
| Maintenance | Low-maintenance |
| Material sliding Layer | E50 |
| Material back | Steel |

Main Dimensions & Performance Data

| | | |
|-------------|-----------|----------------------------------|
| D_i | 22 mm | Inner diameter |
| s_3 | 1,5 mm | Wall thickness |
| C_a | 52.800 N | Basic dynamic load rating, axial |
| C_{0a} | 106.000 N | Basic static load rating, axial |
| D_o | 38 mm | Outer Diameter |
| $\approx m$ | 6,3 g | Weight |

**Dimensions**

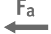
| | | |
|--------------------|----------|--|
| J | 30 mm | Pitch circle |
| d ₁ | 3 mm | Fixing hole diameter |
| t _a | 1 mm | Mounting dimension |
| d _{6a} | 38 mm | Mounting dimension d _{6a} |
| D _{o UT} | -0,25 mm | Outside diameter, lower tolerance |
| D _{i OT} | 0,25 mm | Inner diameter, upper tolerance |
| D _{i UT} | 0 mm | Inner diameter, lower tolerance |
| D _{o OT} | 0 mm | Outside diameter, upper tolerance |
| s _{3 OT} | 0 mm | Wall thickness, upper tolerance |
| s _{3 UT} | -0,05 mm | Wall thickness, lower tolerance |
| J _{OT} | 0,12 mm | Pitch circle, upper tolerance |
| J _{UT} | 0,12 mm | Pitch circle, lower tolerance |
| d _{1 OT} | 0,4 mm | Fixing hole diameter, upper tolerance |
| d _{1 UT} | 0,1 mm | Fixing hole diameter, lower tolerance |
| t _{a OT} | 0,2 mm | Mounting dimension, upper tolerance |
| t _{a UT} | 0,2 mm | Mounting dimension, lower tolerance |
| d _{6a OT} | 0,12 mm | Mounting dimension d _{6a} , upper tolerance |
| d _{6a UT} | 0 mm | Mounting dimension d _{6a} , lower tolerance |


Temperature range

| | | |
|------------------|--------|----------------------------|
| T _{min} | -40 °C | Operating temperature min. |
| T _{max} | 110 °C | Operating temperature max. |



Characteristics

 Axial load in one direction

 Grease Lubrication

 Not sealed

 Small design envelope