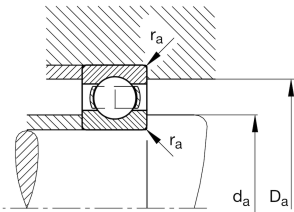
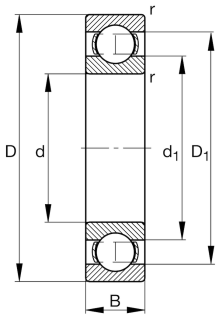
**FAG****6096-M-C3**

Deep groove ball bearing

Deep groove ball bearing 60.-M, single row, solid brass cage

Technical information



Your current product variant

Sealing	Without	Not sealed
Cage	M	Solid brass cage, rolling element guided
Tolerance class	PN	Normal (PN)
Dimensional / heat stabilization	S1	Rings dimensional stabilized up to 200°
Lubricant	Without	Bearing not greased
Radial internal clearance	C3 (Group 3)	Internal clearance larger than CN
Bore type	Z	Cylindrical

Main Dimensions & Performance Data

d	480 mm	Bore diameter
D	700 mm	Outside diameter
B	100 mm	Width
C_r	610.000 N	Basic dynamic load rating, radial
C_{0r}	1.140.000 N	Basic static load rating, radial
C_{ur}	29.000 N	Fatigue load limit, radial
n_G	1.500 1/min	Limiting speed
n_{gr}	1.140 1/min	Reference speed
m	126 kg	Weight



Mounting dimensions

$d_{a \min}$	503 mm	Minimum diameter shaft shoulder
$D_{a \max}$	677 mm	Maximum diameter of housing shoulder
$r_{a \max}$	5 mm	Maximum fillet radius

Dimensions

r_{\min}	6 mm	Minimum chamfer dimension
D_1	634 mm	Shoulder diameter outer ring
d_1	548,7 mm	Shoulder diameter inner ring

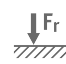
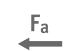
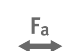



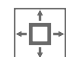
Temperature range

T_{\min}	-30 °C	Operating temperature min.
T_{\max}	200 °C	Operating temperature max.

Calculation factors

f_0	16	Calculation factor
-------	----	--------------------

Characteristics

	Radial load
	Axial load in one direction
	Axial load in two directions
	Grease Lubrication
	Oil Lubrication
	Not sealed
	Large bearing