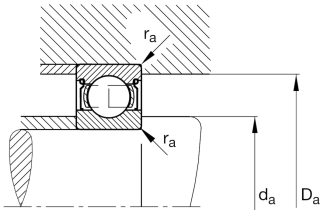
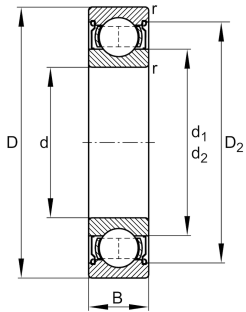


**FAG****6011-Z**

Deep groove ball bearing

Deep groove ball bearing 60...-Z, single row, shield, steel sheet metal cage

## Technical information



## Your current product variant

Type of Seal	Z	Non-contact shield on one Side
Cage	JN	Steel sheet metal
Tolerance class	PN	Normal (PN)
Dimensional / heat stabilization	SN	Rings dimensional stabilized up to 120°
Lubricant	Without	Bearing not greased
Radial internal clearance	CN (Group N)	Normal internal clearance
Bore type	Z	Cylindrical

## Main Dimensions &amp; Performance Data

d	55 mm	Bore diameter
D	90 mm	Outside diameter
B	18 mm	Width
C <sub>r</sub>	30.000 N	Basic dynamic load rating, radial
C <sub>0r</sub>	21.200 N	Basic static load rating, radial
C <sub>ur</sub>	1.150 N	Fatigue load limit, radial
n <sub>G</sub>	10.700 1/min	Limiting speed
n <sub>gr</sub>	8.300 1/min	Reference speed
≈m	374,28 g	Weight



### Mounting dimensions

$d_{a \min}$	61 mm	Minimum diameter shaft shoulder
$D_{a \max}$	84 mm	Maximum diameter of housing shoulder
$r_{a \max}$	1 mm	Maximum fillet radius

### Dimensions

$r_{\min}$	1,1 mm	Minimum chamfer dimension
$D_1$	78,86 mm	Shoulder diameter outer ring
$D_2$	81,54 mm	Caliber diameter outer ring
$d_1$	66,2 mm	Shoulder diameter inner ring

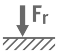





### Temperature range

$T_{\min}$	-30 °C	Operating temperature min.
$T_{\max}$	120 °C	Operating temperature max.

### Calculation factors

$f_0$	15,3	Calculation factor
-------	------	--------------------

### Characteristics

	Radial load
	Axial load in one direction
	Axial load in two directions
	Grease Lubrication
	Oil Lubrication
	Sealed on one side