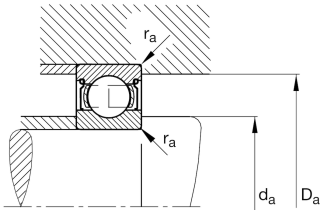
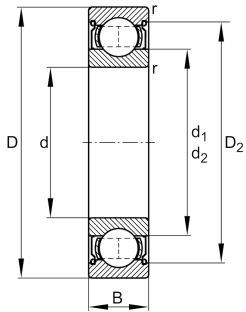


**FAG****6020-Z-C3**

Deep groove ball bearing

Deep groove ball bearing 60...Z, single row, shield, steel sheet metal cage

Technical information



Your current product variant

Type of Seal	Z	Non-contact shield on one Side
Cage	JN	Steel sheet metal
Tolerance class	PN	Normal (PN)
Dimensional / heat stabilization	S0	Rings dimensional stabilized up to 150°
Lubricant	Without	Bearing not greased
Radial internal clearance	C3 (Group 3)	Internal clearance larger than CN
Bore type	Z	Cylindrical

Main Dimensions & Performance Data

d	100 mm	Bore diameter
D	150 mm	Outside diameter
B	24 mm	Width
C _r	64.000 N	Basic dynamic load rating, radial
C _{0r}	54.000 N	Basic static load rating, radial
C _{ur}	3.050 N	Fatigue load limit, radial
n _G	6.100 1/min	Limiting speed
n _{gr}	5.100 1/min	Reference speed
≈m	1,28 kg	Weight



Mounting dimensions

$d_{a \min}$	107 mm	Minimum diameter shaft shoulder
$D_{a \max}$	143 mm	Maximum diameter of housing shoulder
$r_{a \max}$	1,5 mm	Maximum fillet radius

Dimensions

r_{\min}	1,5 mm	Minimum chamfer dimension
D_1	134,12 mm	Shoulder diameter outer ring
D_2	137,3 mm	Caliber diameter outer ring
d_1	116,2 mm	Shoulder diameter inner ring


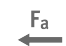




Temperature range

T_{\min}	-30 °C	Operating temperature min.
T_{\max}	150 °C	Operating temperature max.

Calculation factors

f_0	15,8	Calculation factor
-------	------	--------------------

Characteristics

	Radial load
	Axial load in one direction
	Axial load in two directions
	Grease Lubrication
	Oil Lubrication
	Sealed on one side