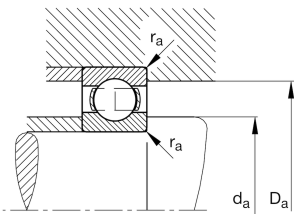
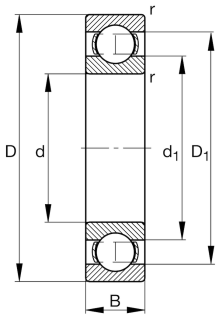
**FAG****619/630-M-C3**

Deep groove ball bearing

Deep groove ball bearing 619..-M, single row,  
solid brass cage

## Technical information



## Your current product variant

Sealing	Without	Not sealed
Cage	M	Solid brass cage, rolling element guided
Tolerance class	PN	Normal (ISO 492:2023)
Dimensional / heat stabilization	S1	Rings dimensional stabilized up to 200°
Lubricant	Without	Bearing not greased
Radial internal clearance	C3 (Group 3)	Internal clearance larger than CN
Bore type	Z	Cylindrical

## Main Dimensions &amp; Performance Data

d	630 mm	Bore diameter
D	850 mm	Outside diameter
B	100 mm	Width
$C_r$	630.000 N	Basic dynamic load rating, radial
$C_{0r}$	1.330.000 N	Basic static load rating, radial
$C_{ur}$	29.000 N	Fatigue load limit, radial
$n_G$	1.220 1/min	Limiting speed
$n_{gr}$	840 1/min	Reference speed
$m$	166 kg	Weight



### Mounting dimensions

$d_{a \min}$	653 mm	Minimum diameter shaft shoulder
$D_{a \max}$	827 mm	Maximum diameter of housing shoulder
$r_{a \max}$	5 mm	Maximum fillet radius

### Dimensions

$r_{\min}$	6 mm	Minimum chamfer dimension
$D_1$	781,9 mm	Shoulder diameter outer ring
$d_1$	700,6 mm	Shoulder diameter inner ring

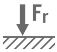
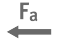




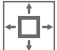
### Temperature range

$T_{\min}$	-30 °C	Operating temperature min.
$T_{\max}$	200 °C	Operating temperature max.

### Calculation factors

$f_0$	16,5	Calculation factor
-------	------	--------------------

### Characteristics

	Radial load
	Axial load in one direction
	Axial load in two directions
	Grease Lubrication
	Oil Lubrication
	Not sealed
	Large bearing