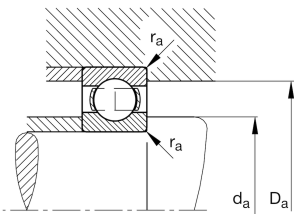
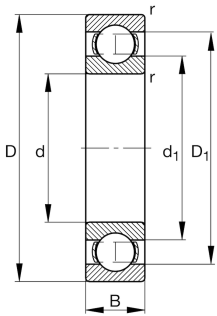
**FAG****61980-MA-C3**

Deep groove ball bearing

Deep groove ball bearing 619..-MA, single row, solid brass cage

## Technical information



## Your current product variant

Sealing	Without	Not sealed
Cage	MA	Solid brass cage, outer ring guided
Tolerance class	PN	Normal (ISO 492:2023)
Dimensional / heat stabilization	S1	Rings dimensional stabilized up to 200°
Lubricant	Without	Bearing not greased
Radial internal clearance	C3 (Group 3)	Internal clearance larger than CN
Bore type	Z	Cylindrical

## Main Dimensions &amp; Performance Data

d	400 mm	Bore diameter
D	540 mm	Outside diameter
B	65 mm	Width
$C_r$	375.000 N	Basic dynamic load rating, radial
$C_{0r}$	620.000 N	Basic static load rating, radial
$C_{ur}$	16.200 N	Fatigue load limit, radial
$n_G$	1.960 1/min	Limiting speed
$n_{gr}$	1.360 1/min	Reference speed
$m$	41,9 kg	Weight



### Mounting dimensions

$d_{a \min}$	414,6 mm	Minimum diameter shaft shoulder
$D_{a \max}$	525,4 mm	Maximum diameter of housing shoulder
$r_{a \max}$	3 mm	Maximum fillet radius

### Dimensions

$r_{\min}$	4 mm	Minimum chamfer dimension
$D_1$	499,3 mm	Shoulder diameter outer ring
$d_1$	443,35 mm	Shoulder diameter inner ring

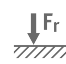
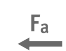
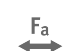



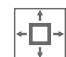
### Temperature range

$T_{\min}$	-30 °C	Operating temperature min.
$T_{\max}$	200 °C	Operating temperature max.

### Calculation factors

$f_0$	16,5	Calculation factor
-------	------	--------------------

### Characteristics

	Radial load
	Axial load in one direction
	Axial load in two directions
	Grease Lubrication
	Oil Lubrication
	Not sealed
	Large bearing