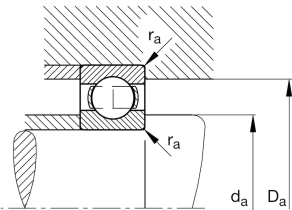
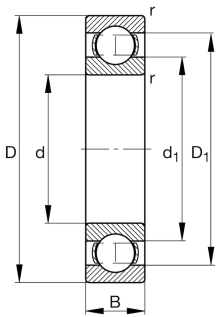


**FAG****6219-C2**

Deep groove ball bearing

Deep groove ball bearing 62, single row, steel sheet metal cage

Technical information



Your current product variant

Type of Seal	Without	Not sealed
Cage	JN	Steel sheet metal
Tolerance class	PN	Normal (PN)
Dimensional / heat stabilization	S0	Rings dimensional stabilized up to 150°
Lubricant	Without	Bearing not greased
Radial internal clearance	C2 (Group 2)	Internal clearance smaller than CN
Bore type	Z	Cylindrical

Main Dimensions & Performance Data

d	95 mm	Bore diameter
D	170 mm	Outside diameter
B	32 mm	Width
C_r	116.000 N	Basic dynamic load rating, radial
C_{0r}	82.000 N	Basic static load rating, radial
C_{ur}	4.800 N	Fatigue load limit, radial
n_G	5.300 1/min	Limiting speed
n_{gr}	4.950 1/min	Reference speed
m	2,73 kg	Weight



Mounting dimensions

$d_{a \min}$	107 mm	Minimum diameter shaft shoulder
$D_{a \max}$	158 mm	Maximum diameter of housing shoulder
$r_{a \max}$	2,1 mm	Maximum fillet radius

Dimensions

r_{\min}	2,1 mm	Minimum chamfer dimension
D_1	146,72 mm	Shoulder diameter outer ring
d_1	118,66 mm	Shoulder diameter inner ring

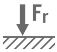
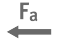




Temperature range

T_{\min}	-30 °C	Operating temperature min.
T_{\max}	150 °C	Operating temperature max.

Calculation factors

f_0	14,5	Calculation factor
-------	------	--------------------

Characteristics

	Radial load
	Axial load in one direction
	Axial load in two directions
	Grease Lubrication
	Oil Lubrication
	Not sealed