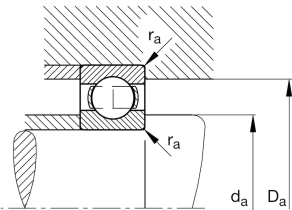
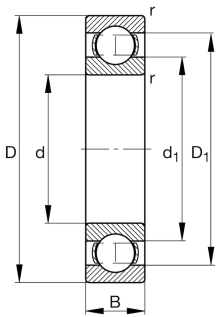


**FAG****6226-C3**

Deep groove ball bearing

Deep groove ball bearing 62, single row, steel sheet metal cage

Technical information

**Your current product variant**

Sealing	Without	Not sealed
Cage	JN	Steel sheet metal
Tolerance class	PN	Normal (PN)
Dimensional / heat stabilization	S0	Rings dimensional stabilized up to 150°
Lubricant	Without	Bearing not greased
Radial internal clearance	C3 (Group 3)	Internal clearance larger than CN
Bore type	Z	Cylindrical

Main Dimensions & Performance Data

d	130 mm	Bore diameter
D	230 mm	Outside diameter
B	40 mm	Width
C_r	177.000 N	Basic dynamic load rating, radial
C_{0r}	146.000 N	Basic static load rating, radial
C_{ur}	7.700 N	Fatigue load limit, radial
n_G	3.850 1/min	Limiting speed
n_{gr}	3.900 1/min	Reference speed
m	6 kg	Weight



Mounting dimensions

$d_{a \min}$	144 mm	Minimum diameter shaft shoulder
$D_{a \max}$	216 mm	Maximum diameter of housing shoulder
$r_{a \max}$	2,5 mm	Maximum fillet radius

Dimensions

r_{\min}	3 mm	Minimum chamfer dimension
D_1	198,64 mm	Shoulder diameter outer ring
d_1	161,42 mm	Shoulder diameter inner ring

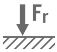
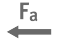




Temperature range

T_{\min}	-30 °C	Operating temperature min.
T_{\max}	150 °C	Operating temperature max.

Calculation factors

f_0	14,5	Calculation factor
-------	------	--------------------

Characteristics

	Radial load
	Axial load in one direction
	Axial load in two directions
	Grease Lubrication
	Oil Lubrication
	Not sealed