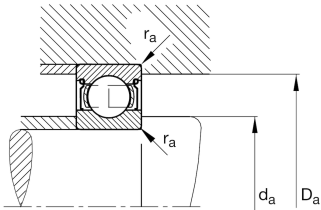
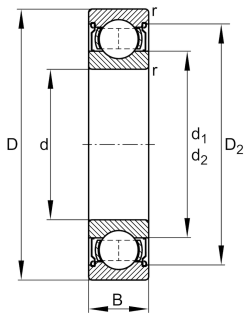


**FAG****6215-2Z-C4** [↗](#)

Deep groove ball bearing

Deep groove ball bearing 62...-2Z, single row, shields, steel sheet metal cage

Technical information



Your current product variant

Sealing	2Z	Non-contact shield on both sides
Cage	JN	Steel sheet metal
Tolerance class	PN	Normal (ISO 492:2023)
Dimensional / heat stabilization	S0	Rings dimensional stabilized up to 150°
Lubricant	GA13	Ball bearing and insert bearing grease
Radial internal clearance	C4 (Group 4)	Internal clearance larger than C3
Bore type	Z	Cylindrical

Main Dimensions & Performance Data

d	75 mm	Bore diameter
D	130 mm	Outside diameter
B	25 mm	Width
C _r	70.000 N	Basic dynamic load rating, radial
C _{0r}	49.000 N	Basic static load rating, radial
C _{ur}	3.300 N	Fatigue load limit, radial
n _G	6.600 1/min	Limiting speed
n _{gr}	5.900 1/min	Reference speed
≈m	1,21 kg	Weight



Mounting dimensions

$d_{a \min}$	84 mm	Minimum diameter shaft shoulder
$D_{a \max}$	121 mm	Maximum diameter of housing shoulder
$r_{a \max}$	1,5 mm	Maximum fillet radius

Dimensions

r_{\min}	1,5 mm	Minimum chamfer dimension
D_1	113 mm	Shoulder diameter outer ring
D_2	115,5 mm	Caliber diameter outer ring
d_1	92,1 mm	Shoulder diameter inner ring


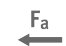




Temperature range

T_{\min}	-20 °C	Operating temperature min.
T_{\max}	120 °C	Operating temperature max.

Calculation factors

f_0	14,6	Calculation factor
-------	------	--------------------

Characteristics

-  Radial load
-  Axial load in one direction
-  Axial load in two directions
-  Lifetime lubrication, freedom from maintenance
-  Grease Lubrication
-  Sealed on both sides