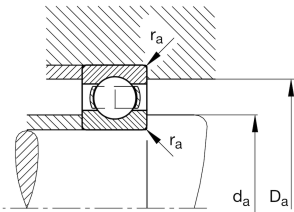
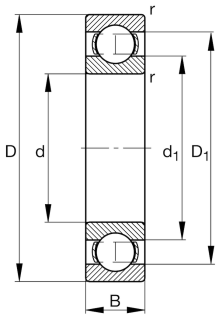
**FAG****6228-M-C3**

Deep groove ball bearing

Deep groove ball bearing 62...-M, single row,
solid brass cage

Technical information



Your current product variant

Sealing	Without	Not sealed
Cage	M	Solid brass cage, rolling element guided
Tolerance class	PN	Normal (ISO 492:2023)
Dimensional / heat stabilization	S1	Rings dimensional stabilized up to 200°
Lubricant	Without	Bearing not greased
Radial internal clearance	C3 (Group 3)	Internal clearance larger than CN
Bore type	Z	Cylindrical

Main Dimensions & Performance Data

d	140 mm	Bore diameter
D	250 mm	Outside diameter
B	42 mm	Width
C_r	188.000 N	Basic dynamic load rating, radial
C_{0r}	165.000 N	Basic static load rating, radial
C_{ur}	8.400 N	Fatigue load limit, radial
n_G	4.650 1/min	Limiting speed
n_{gr}	3.600 1/min	Reference speed
m	9,061 kg	Weight



Mounting dimensions

$d_{a \min}$	154 mm	Minimum diameter shaft shoulder
$D_{a \max}$	236 mm	Maximum diameter of housing shoulder
$r_{a \max}$	2,5 mm	Maximum fillet radius

Dimensions

r_{\min}	3 mm	Minimum chamfer dimension
D_1	213,8 mm	Shoulder diameter outer ring
d_1	175,9 mm	Shoulder diameter inner ring

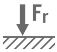
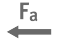




Temperature range

T_{\min}	-30 °C	Operating temperature min.
T_{\max}	200 °C	Operating temperature max.

Calculation factors

f_0	14,9	Calculation factor
-------	------	--------------------

Characteristics

	Radial load
	Axial load in one direction
	Axial load in two directions
	Grease Lubrication
	Oil Lubrication
	Not sealed